

40 SINCE 1978 YRS

See the future
SIUI

Shantou Institute of Ultrasonic Instruments Co., Ltd.

HEADQUARTERS:

Shantou Institute of Ultrasonic Instruments Co., Ltd.
Add: No.77, Jinsha Road, Shantou 515041 Guangdong, China
Tel: 86-754-8825 0150 Fax: 86-754-8825 1499
E-mail: siui@siui.com

HONG KONG OFFICE:

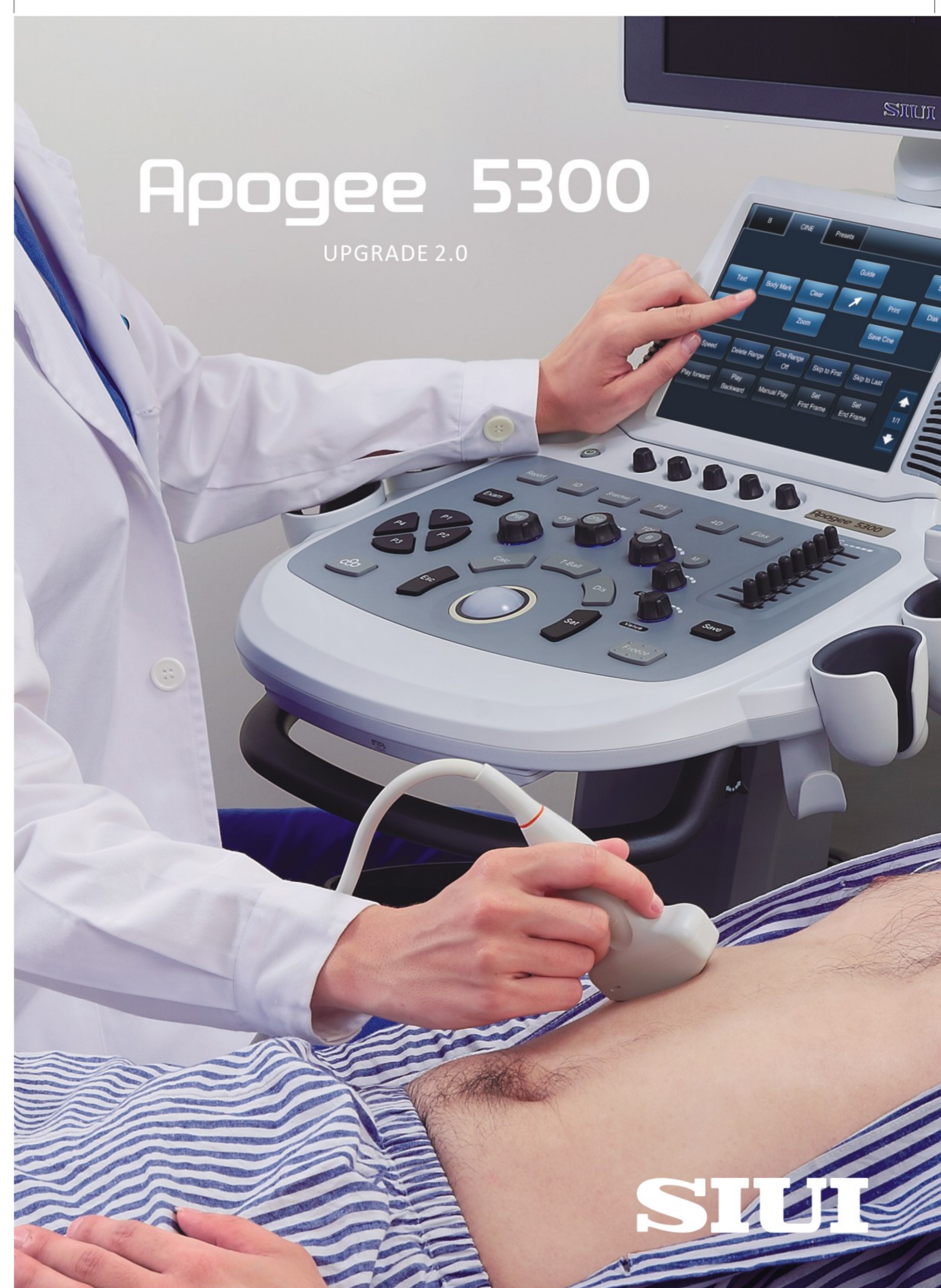
Shantou Institute of Ultrasonic Instruments (HK) Co., Ltd.
Add: Room 2101, Tung Chiu Commercial Center
193 Lockhart Road, Wanchai, Hong Kong
Tel: 852-2891 6722 Fax: 852-2891 6723

www.siui.com



Apogee 5300/EN181022V2.1

© All rights reserved to SIUI 2018





APOGEE 5300 UPGRADE 2.0

Apogee 5300 UPGRADE 2.0 is the latest version of the model. New image processing software package renders obviously improved image quality. And value-added tools allow clinicians to easily practice confident scan across different applications.

Promising image quality relies on newly upgraded technology

Fusion THI 2.0

Based on the new generation of inversion tissue harmonic, Fusion THI 2.0 integrates fundamental wave and harmonic wave in the far field. With greatly enhanced tissue harmonic wave, it delivers penetration-improved image by effectively increasing image resolution and tissue contrast.

Xbeam (new processing method)

The upgraded Xbeam is a new processing mode based at the front end of ultrasound beamforming. With steerable beam angle and the high frame rate, it effectively increases the spatial resolution and reduces tissue shadow. Xbeam applies to most kinds of probes.

Balanced echo compensation

The upgraded Apogee 5300 transplants Balanced echo compensation technology from the high-end platform. It effectively compensates the weak echo signals and restrains the hyperecho signals according to the gray scale distribution, and delivers much more uniform image.

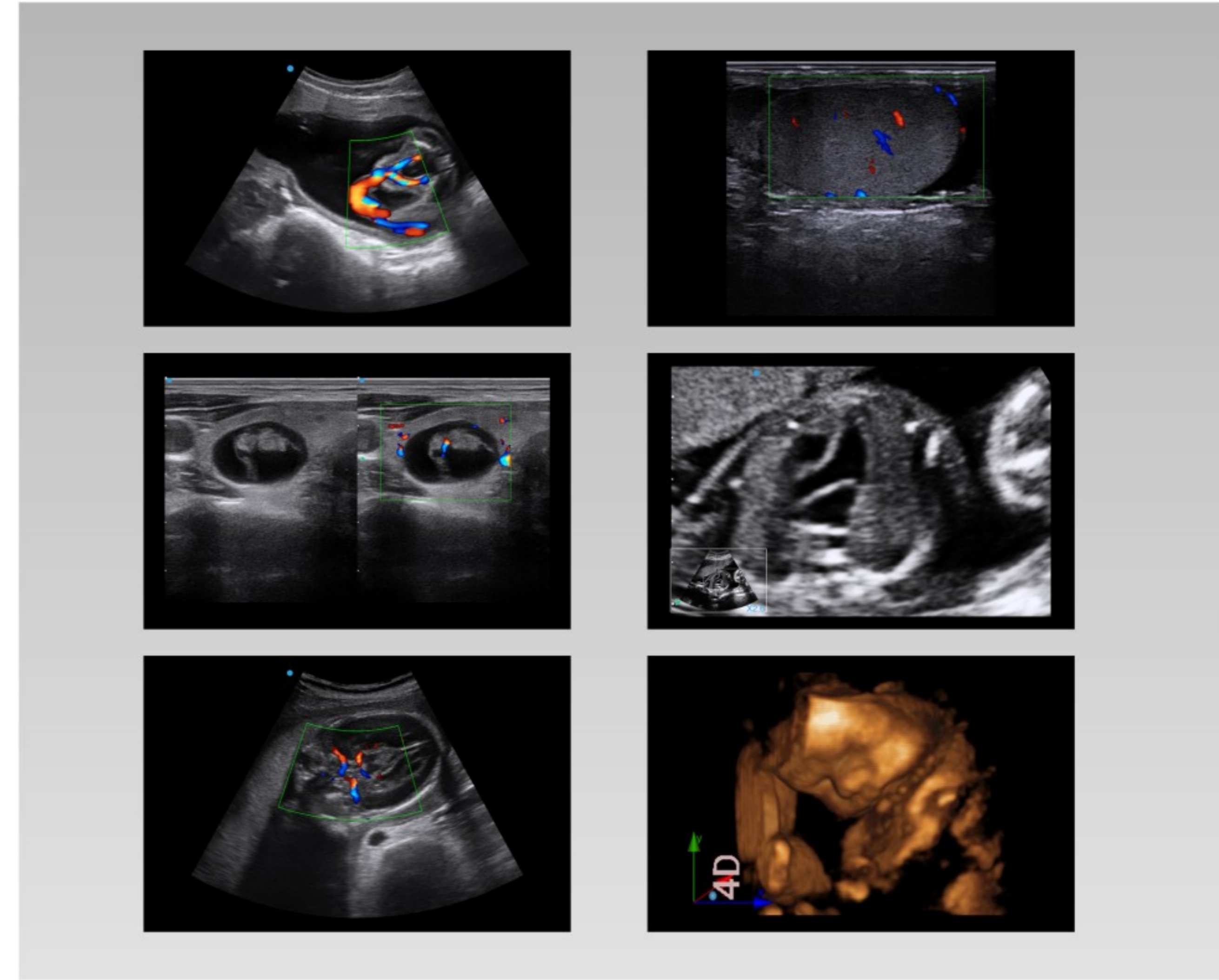
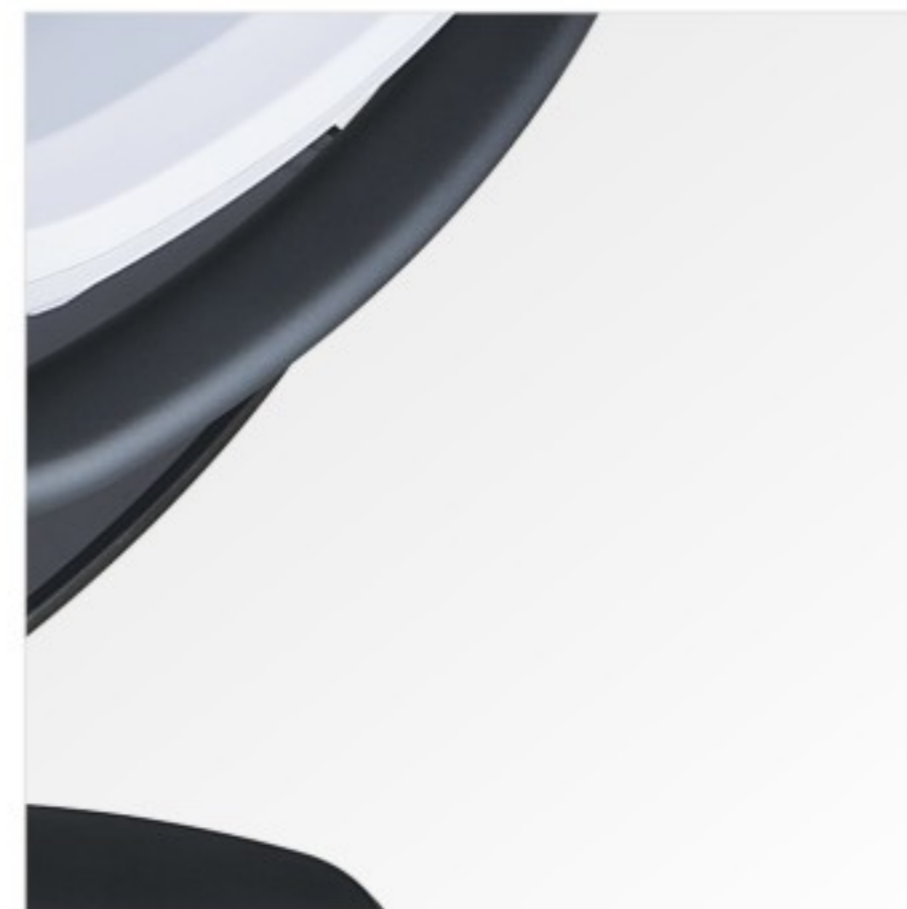
VS Flow

SIUI VS Flow is a high spatial resolution Doppler flow imaging. 30% more side signals is collected to enhance the whole flow sensitivity especially the slow velocity flow.

5Q probe technology

SIUI's 5Q probe technology refers to five technologies that improve the image quality, including high-performance PZT crystal materials, crystal cutting technology, element spacing filler, multiple matching layer technology and optimized sound field wave. All these technology integrated to increase the probe bandwidth, and enhance its sensitivity as well as resolution.

5Q probe technology is available for most probes applied to Apogee 5300.

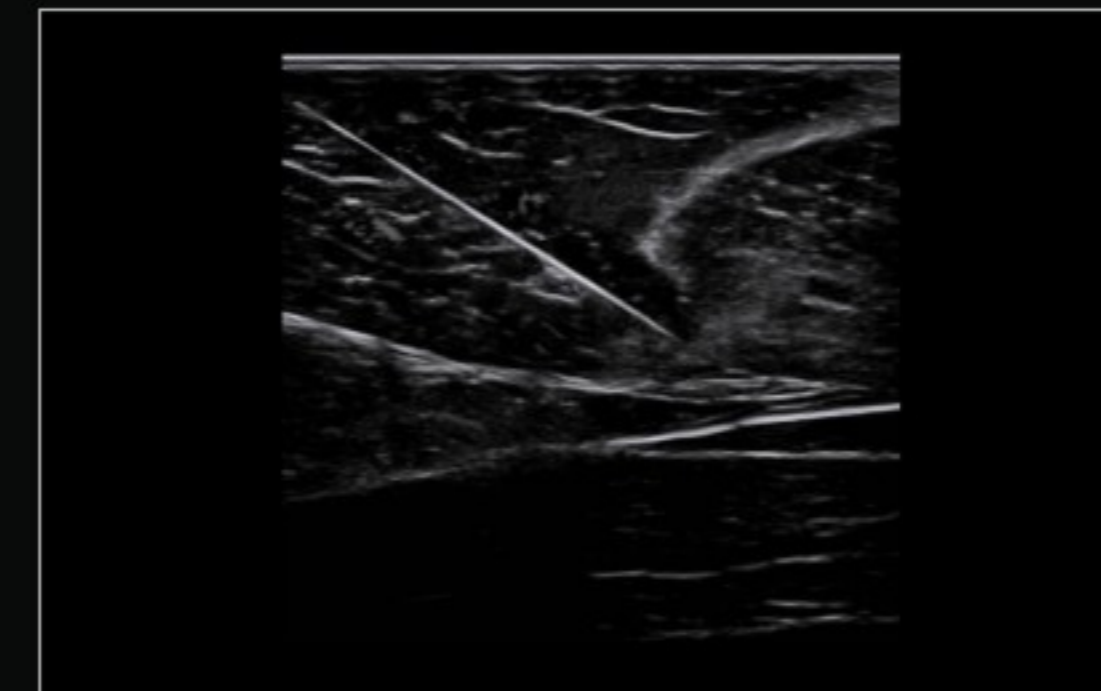


**Optimized performance
in stylish design**

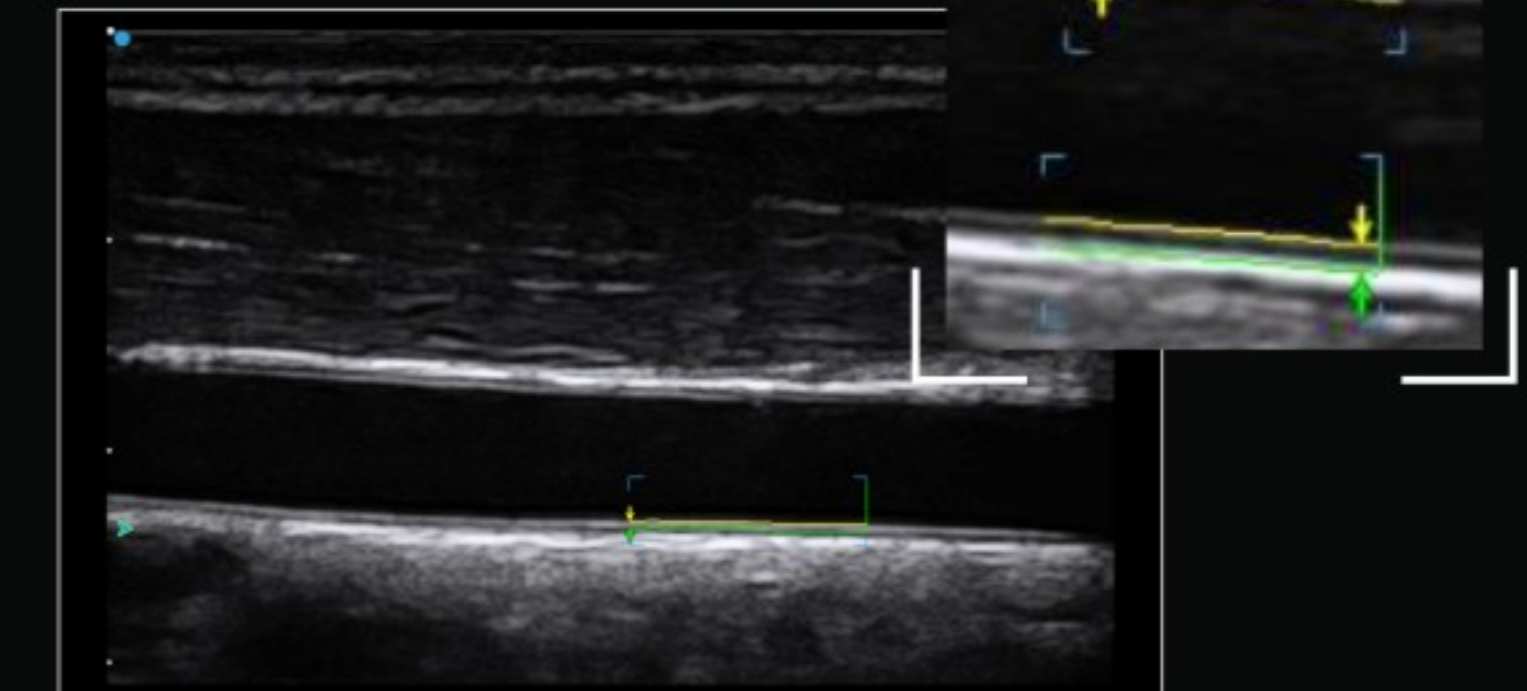


Confident diagnosis comes from professional value-added tools

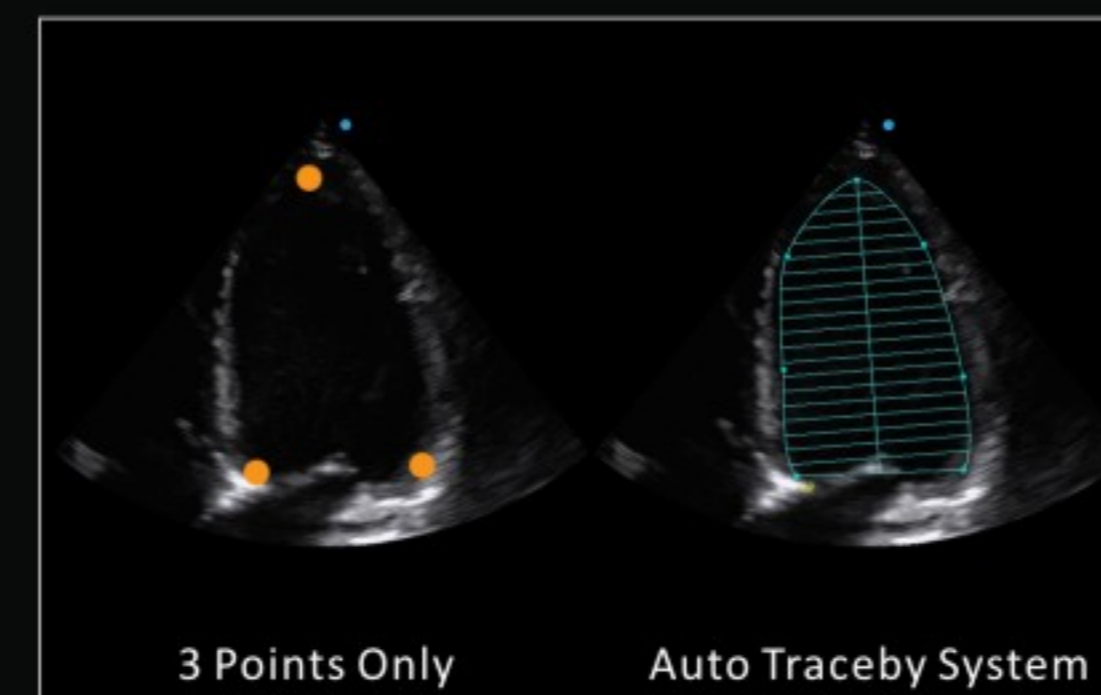
Needle enhancement facilitates
visualized practice



Auto IMT accomplishes
accurate assessment

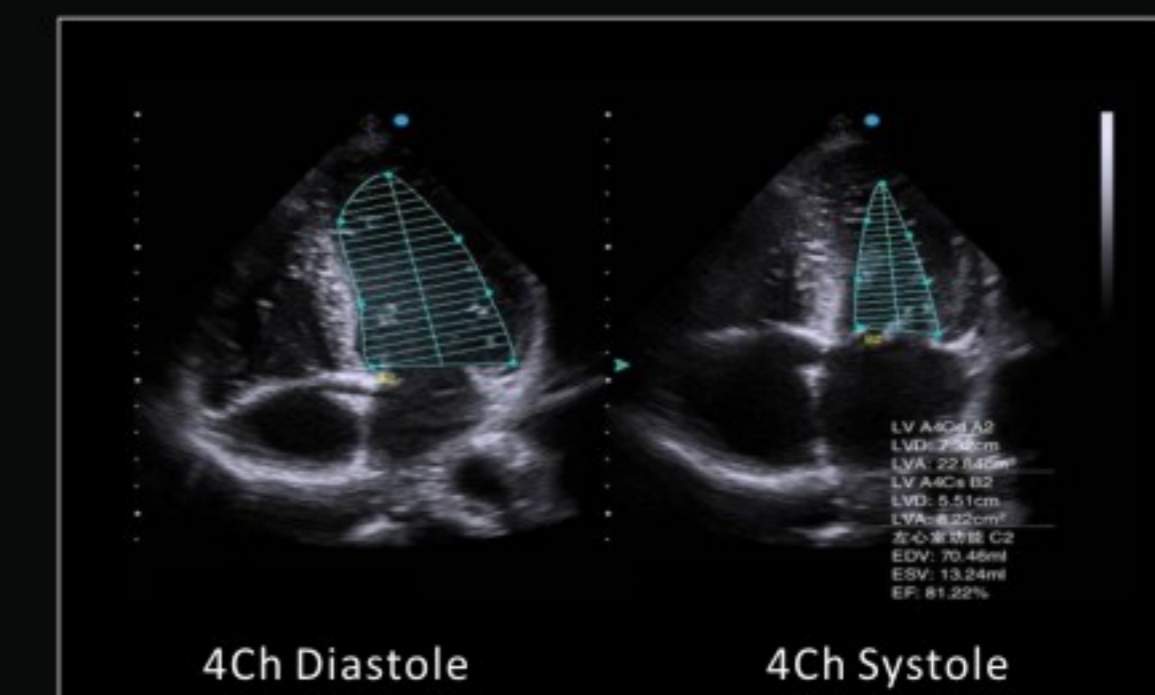


Quick EF enables **efficient** diagnosis



3 Points Only

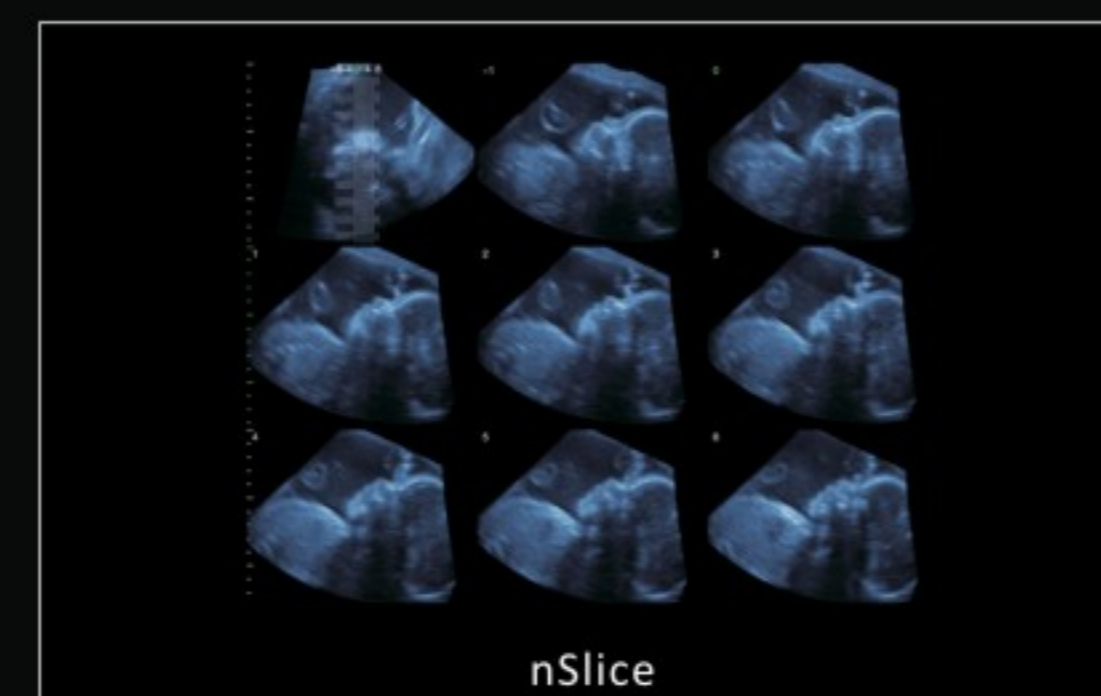
Auto Traceby System



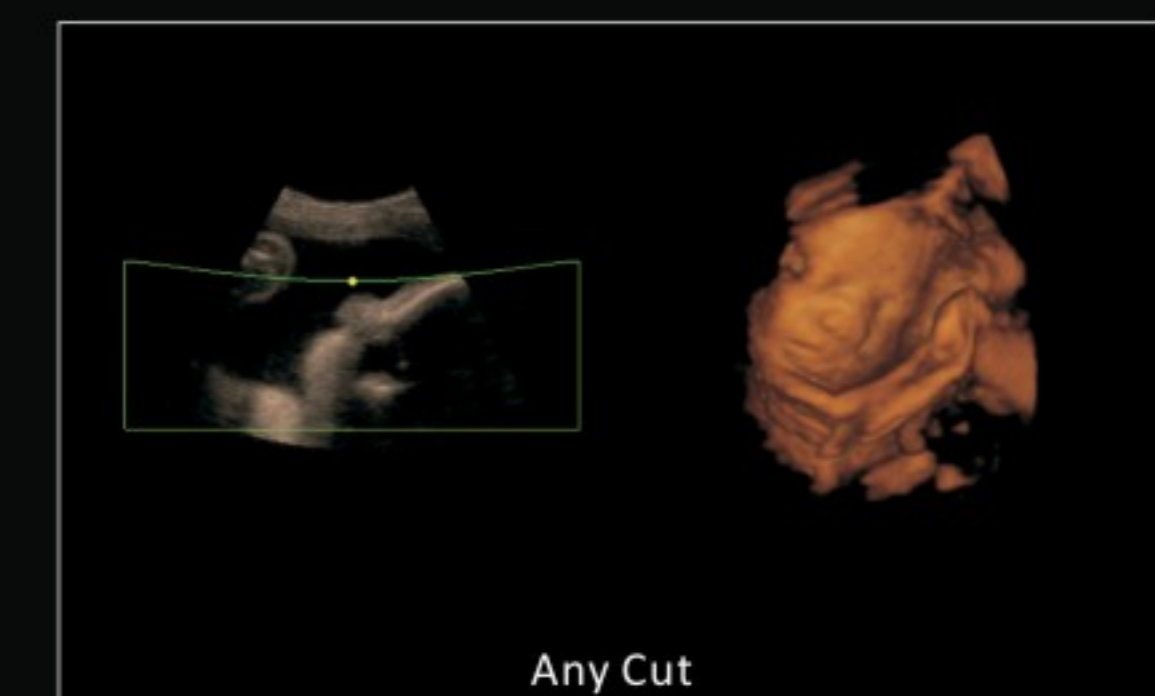
4Ch Diastole

4Ch Systole

4D nSlice / Any cut / Opti-4D carries out **effortless** scanning



nSlice



Any Cut