

Apogee 5500

GRACEFUL AND INTELLIGENT,
REDEFINE THE STANDARD

See the future
SIUI

Shantou Institute of Ultrasonic Instruments Co., Ltd.

HEADQUARTERS:

Shantou Institute of Ultrasonic Instruments Co., Ltd.
Add: No.77, Jinsha Road, Shantou 515041 Guangdong, China
Tel: 86-754-8825 0150 Fax: 86-754-8825 1499
E-mail: siui@siui.com

HONG KONG OFFICE:

Shantou Institute of Ultrasonic Instruments (HK) Co., Ltd.
Add: Room 2101, Tung Chiu Commercial Center
193 Lockhart Road, Wanchai, Hong Kong
Tel: 852-2891 6722 Fax: 852-2891 6723

www.siui.com



SIUI SIUI

Apogee 5500/EN180316V1.1

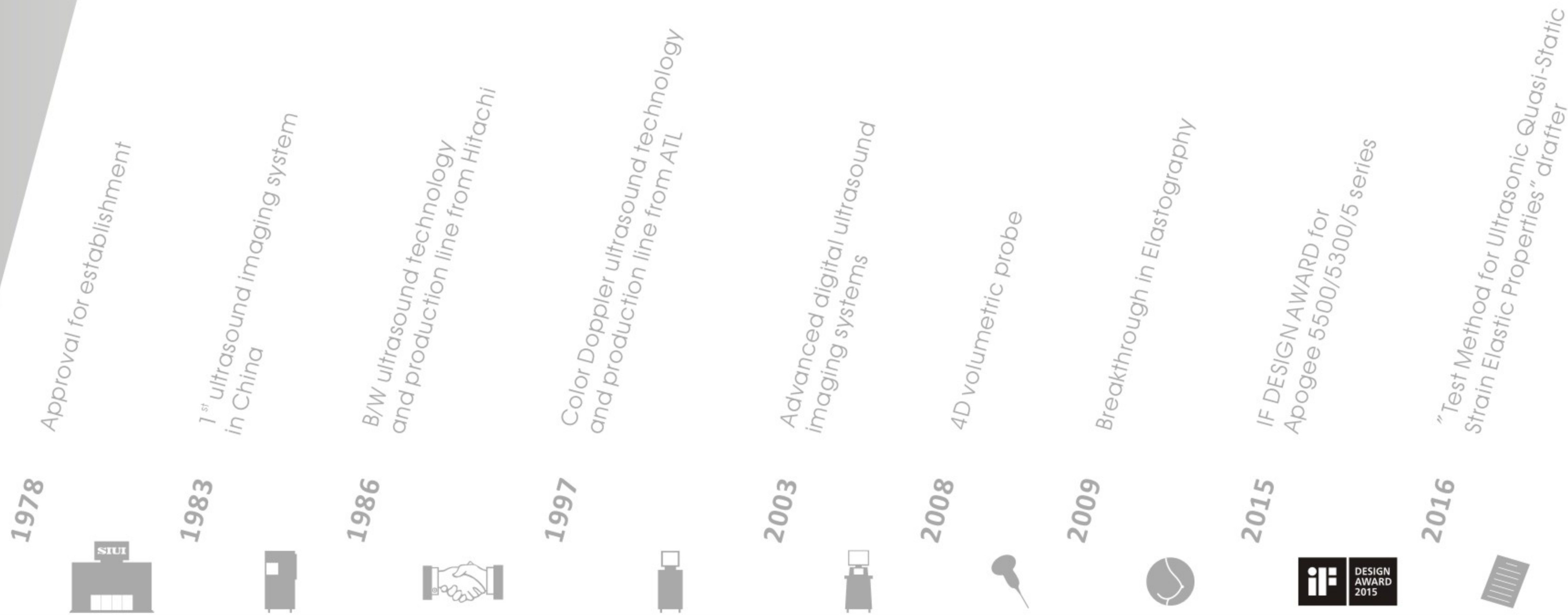
© All rights reserved to SIUI 2017

SIUI

40 SINCE 1978 YRS

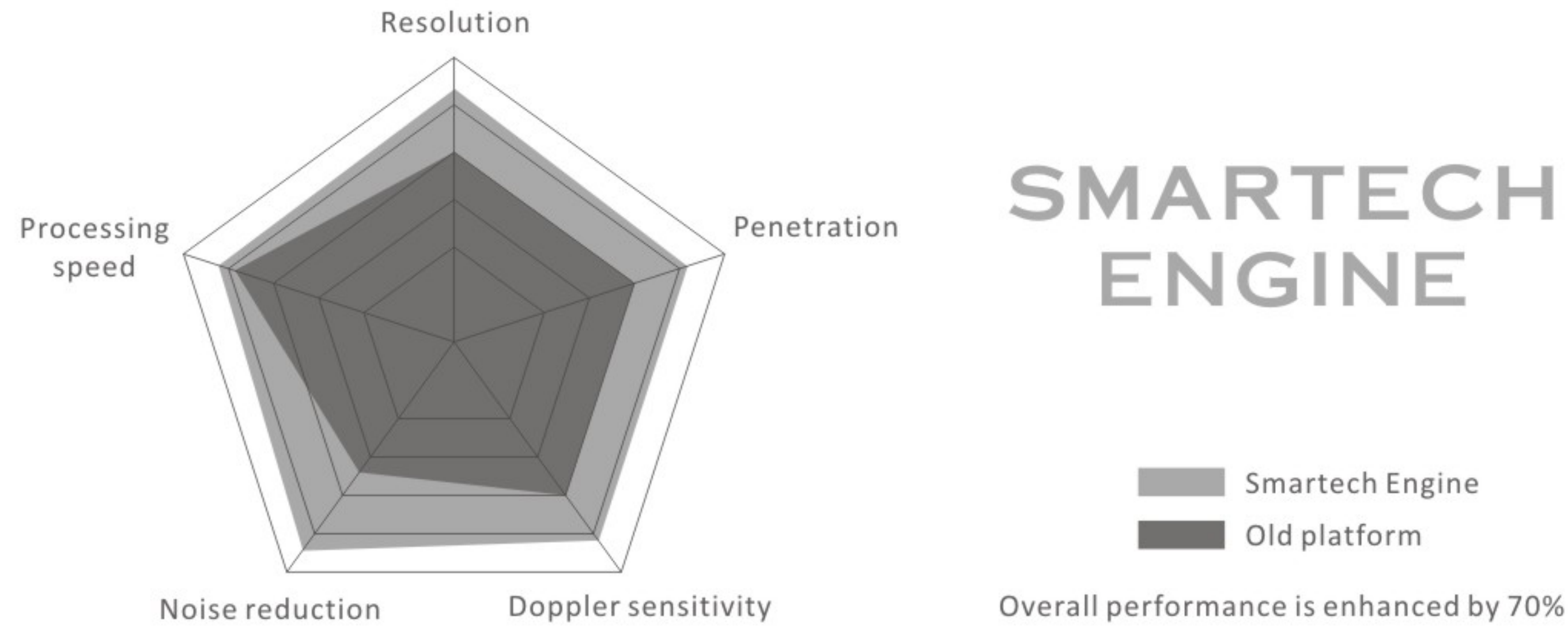
NEWEST VERSION OF THE PREMIUM MODEL

Since 1978, SIUI has been at the forefront of ultrasound imaging. As a company specializing in the field for 40 years, SIUI is excited to announce the newest version of its premium ultrasound system, Apogee 5500. Brand-new image processing platform Smartech incorporates the iF-award design boasting 70% improvement of overall performance. The newly introduced tools allow the system to meet different application challenge and make diagnosis reliable and convenient.



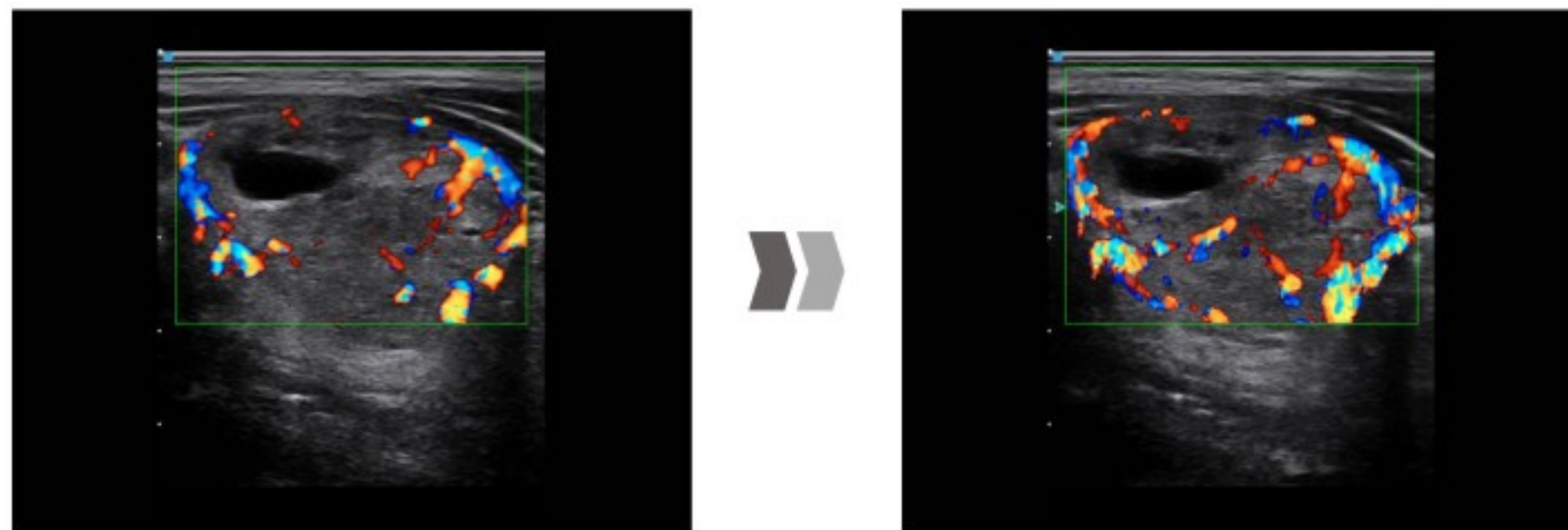
Exclusive technology boosts satisfactory image quality

Smartech Engine is a brand-new intelligent image processing platform. Equipped with extended physic channels, it offers more detailed image signal and higher image density by using high element density probes. Exclusive technology including Balanced echo compensation, Fuzzy logic flow and double speckle reduction technology is applied to offer superb image resolution, exceptional image penetration, advanced flow sensibility and improved S/N ratio. Image quality of both 2D mode and color mode has been improved dramatically.



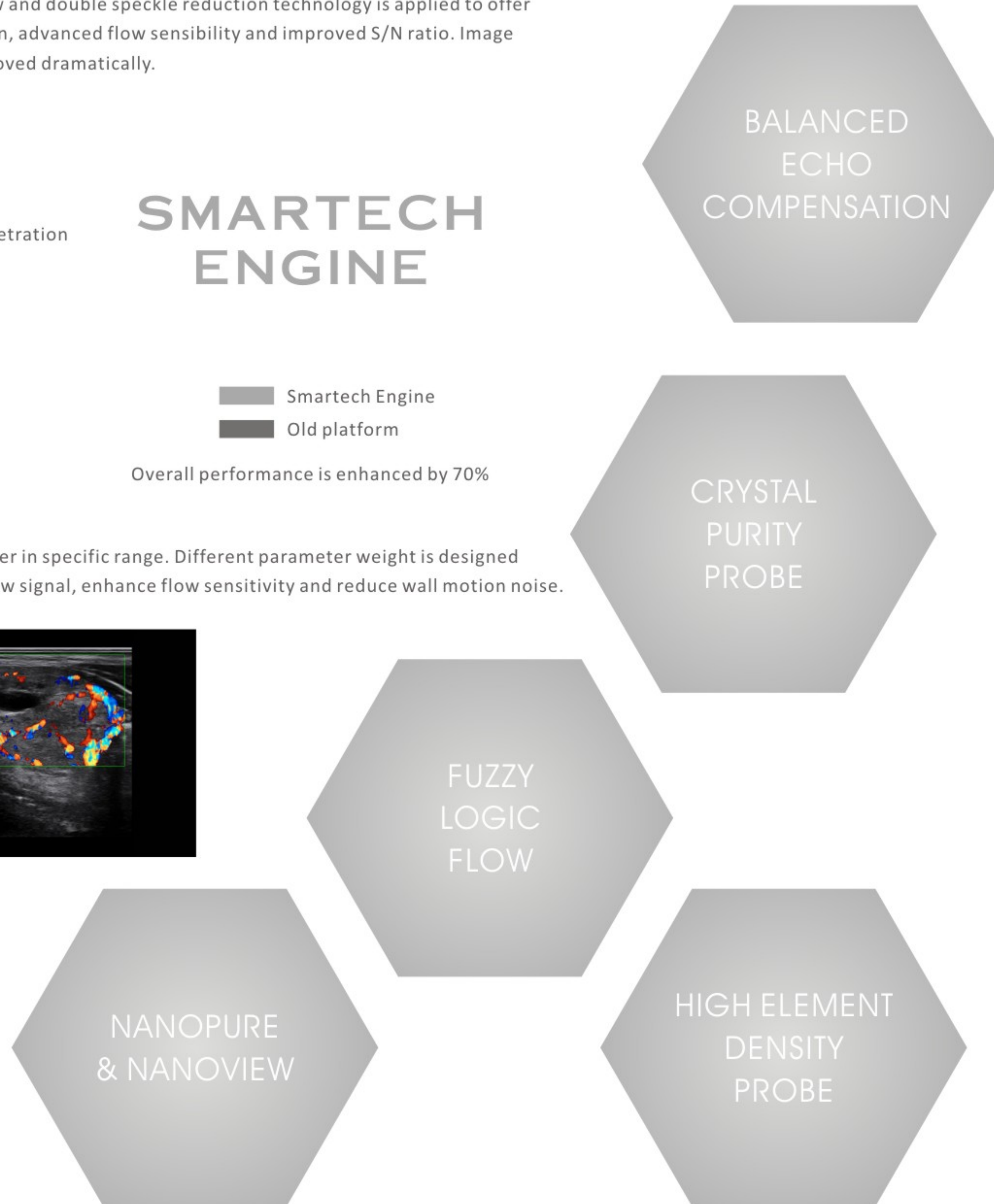
Fuzzy logic flow

Fuzzy logic algorithm is applied to set each key parameter in specific range. Different parameter weight is designed according to targeted tissue so as to furthest restore flow signal, enhance flow sensitivity and reduce wall motion noise.



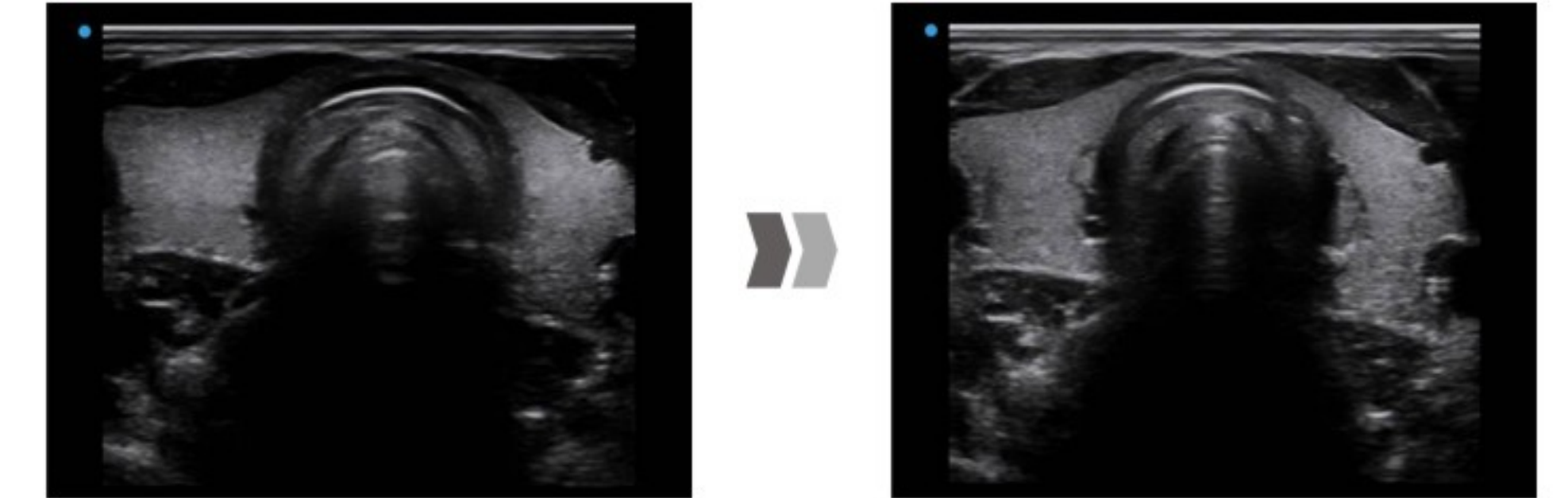
Nanopure & Nanoview

There're two kinds of speckle reduction technology for reference. You can choose either one according to different tissue. The newly developed Nanopure technology has remarkable performance in scanning cardiovascular, MSK and superficial organs, while Nanoview keeps its advantage in abdomen and OBG image optimization.



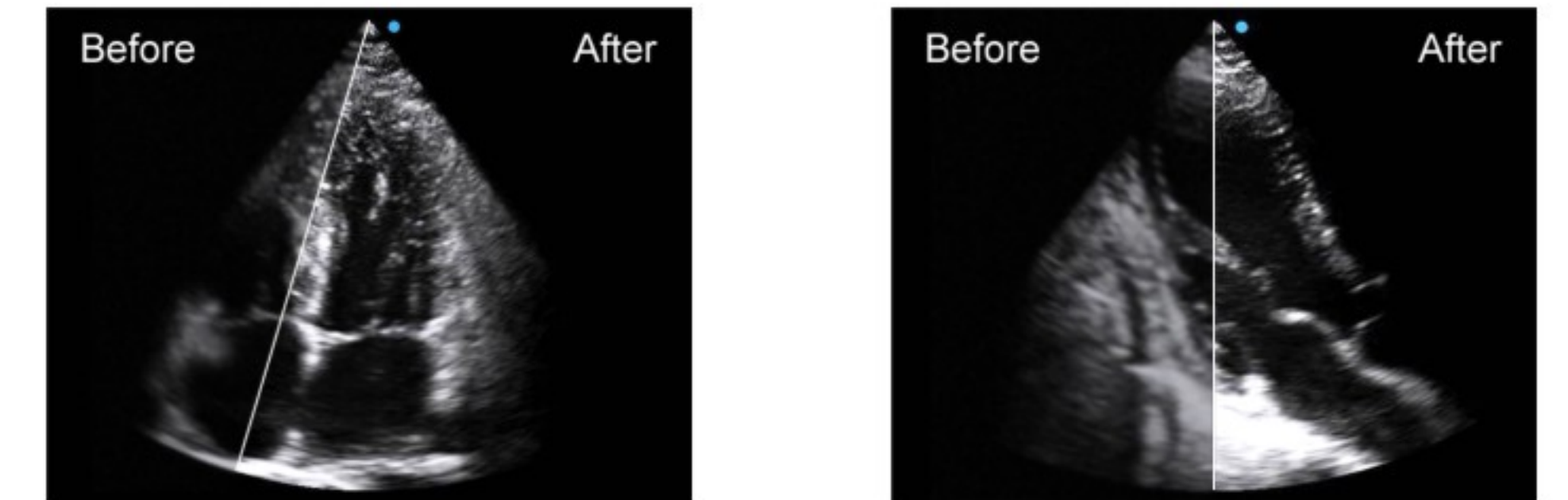
Balanced echo compensation

By calculating the gray scale distribution throughout the image view, the technology recognizes and enhances the effective signals as well as reduces noise beyond boundaries. It significantly improves the tissue uniformity and S/N ratio.



Crystal purity probe

SIUI is one of the few Chinese ultrasound manufacturers that are able to develop transducers independently. Apogee 5500 incorporates SIUI's new generation crystal purity probe. Application of **single crystal** material brings about a huge leap of 110% in bandwidth, which facilitates the probe performance on patients even in difficult model and significantly boosts diagnostic confidence.



High element density probe

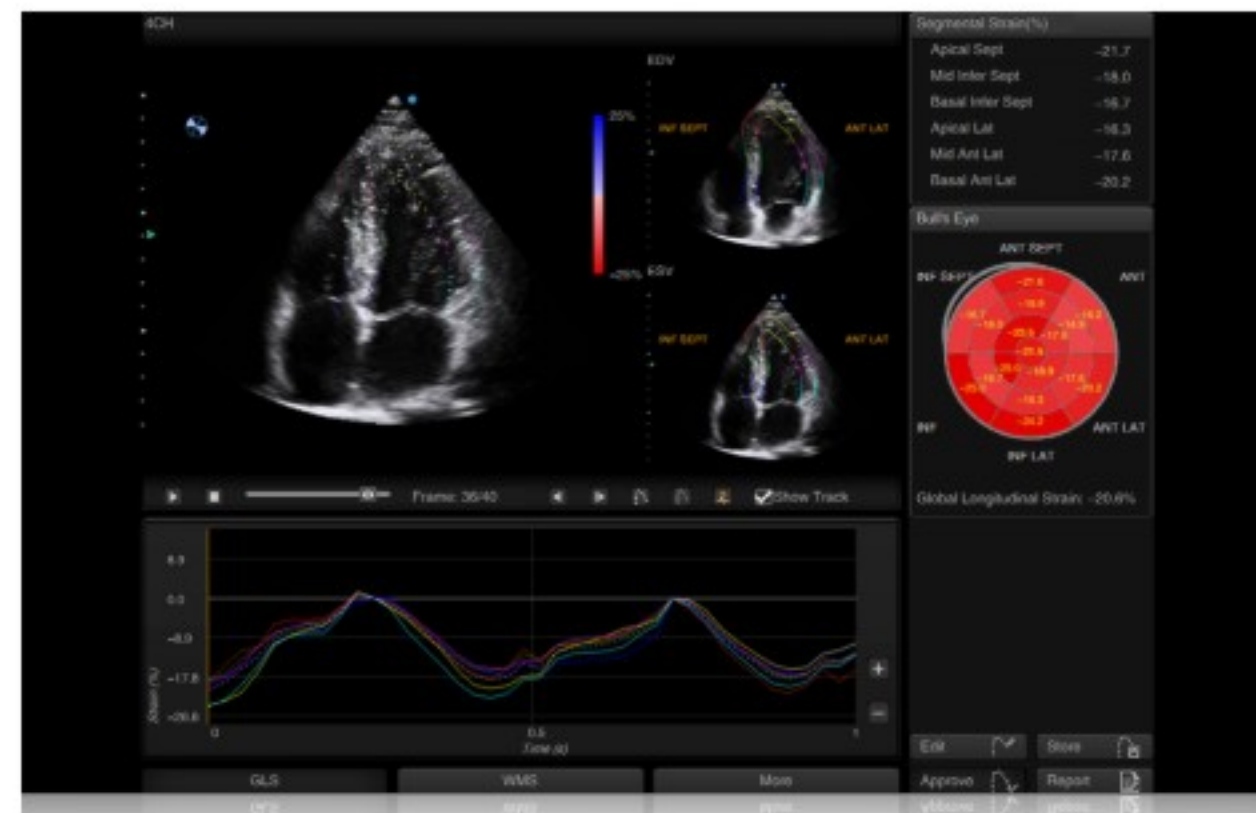
Element density of different probes increases by 25%-50%. High element density probe employed in this system has demonstrated its advantage in image density, resolution and information.

Comprehensive assessment tools insure confident diagnosis

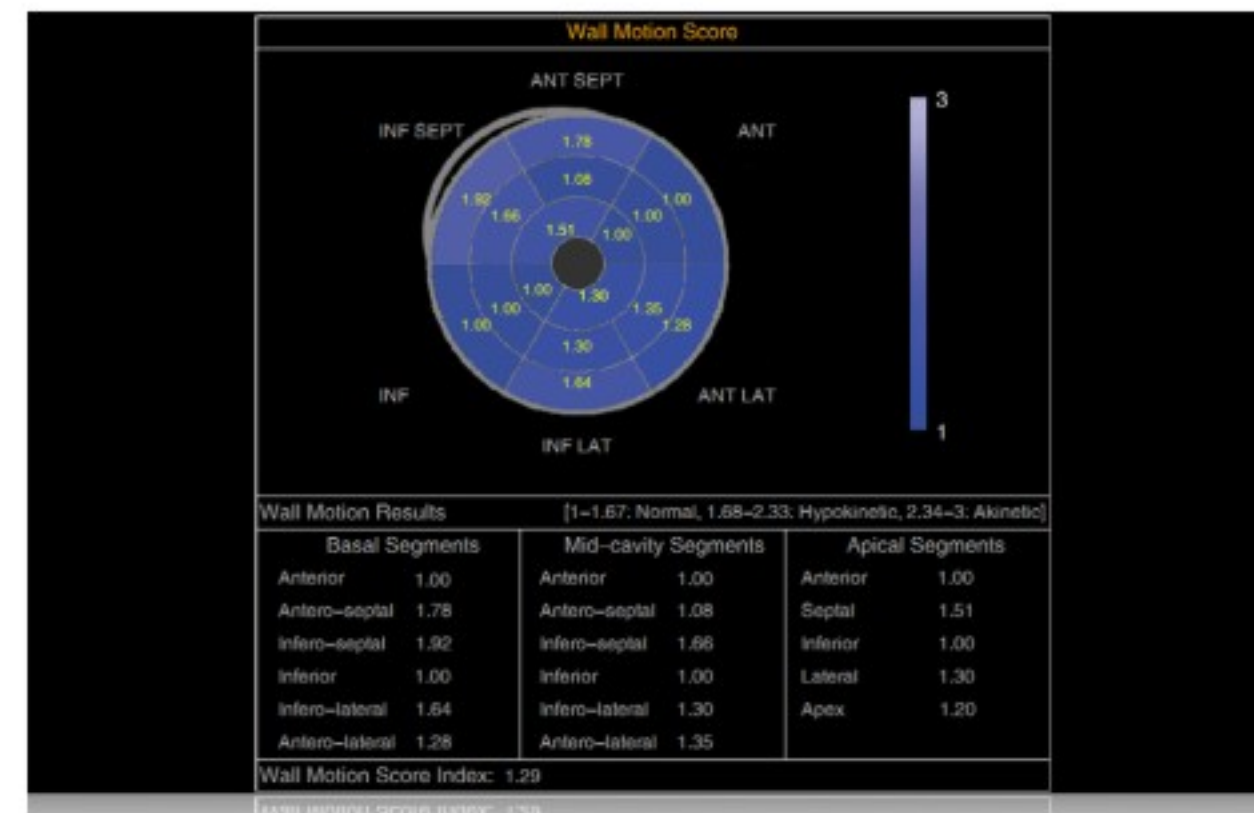


Auto SG

Cardiac Strain Imaging can track and calculate the myocardial tissue deformation. SIUI Auto SG is a quantitative assessment tool for global and segmental wall motion analysis based on cardiac strain imaging. Auto Strain results are presented as a Bull's eye display showing color coded peak systolic strain from apical 4CH/3CH/2CH views. Average Global Longitudinal Strain for the whole LV can be calculated as well. SIUI Auto SG provides fully automated and reproducible results that allow clinicians to analyze and monitor subclinical changes over time. This ability is extremely important in patients at risk for developing heart disease. Detailed analysis of myocardial velocity, displacement, segmental wall motion score and strain rate can be performed simultaneously.



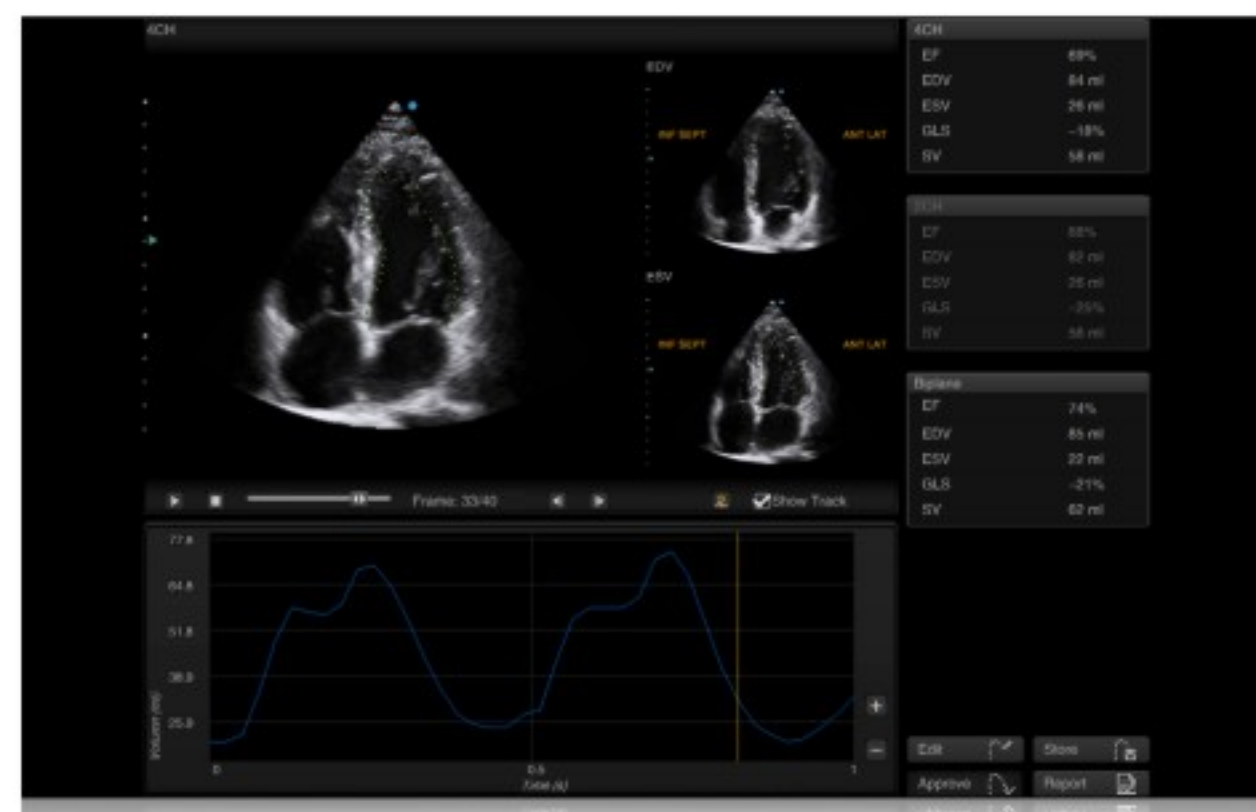
Auto SG



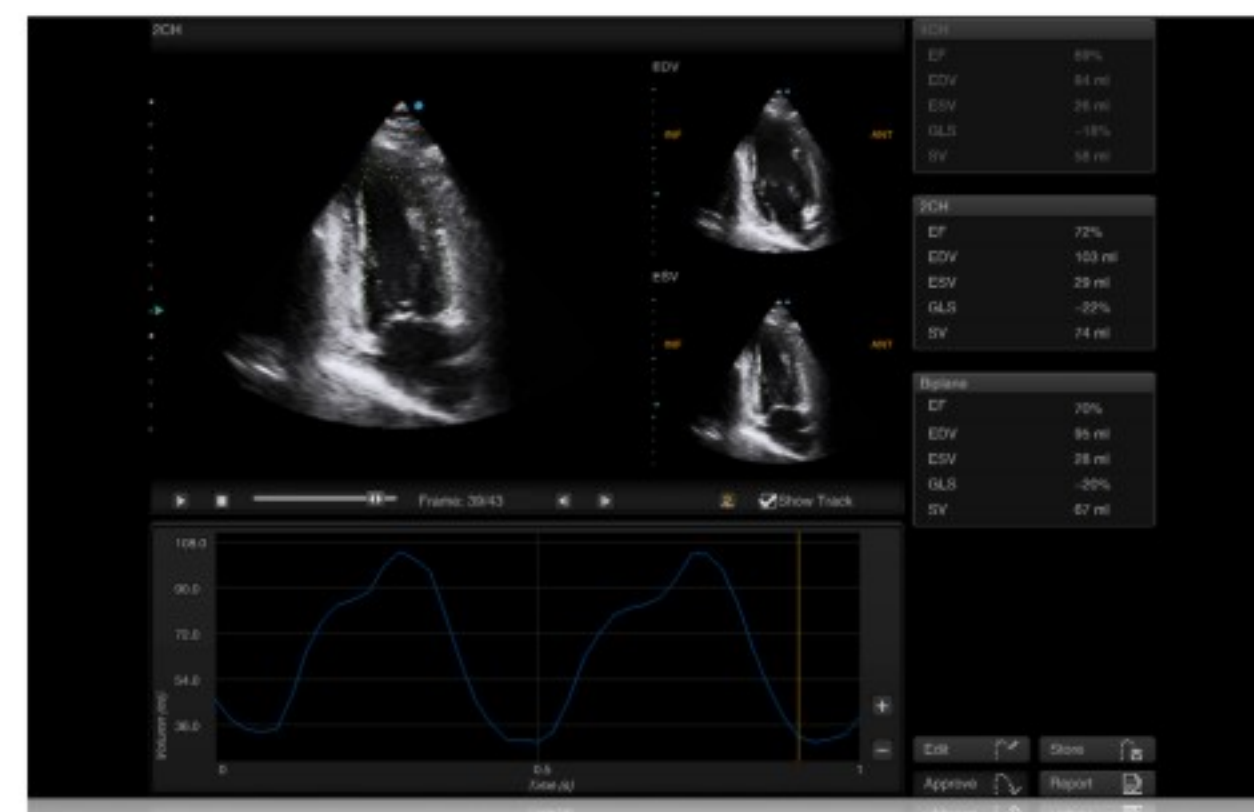
Auto WMS

Auto EF

Ejection Fraction (EF) provides one of the most commonly used parameter to evaluate LV systolic function. SIUI Auto EF is a fully automatic measurement tool used to measure the Left Ventricle global Ejection Fraction. SIUI Auto EF is an optional decision supporting tool for clinicians in daily cardiac function evaluations.



Auto EF 4CH



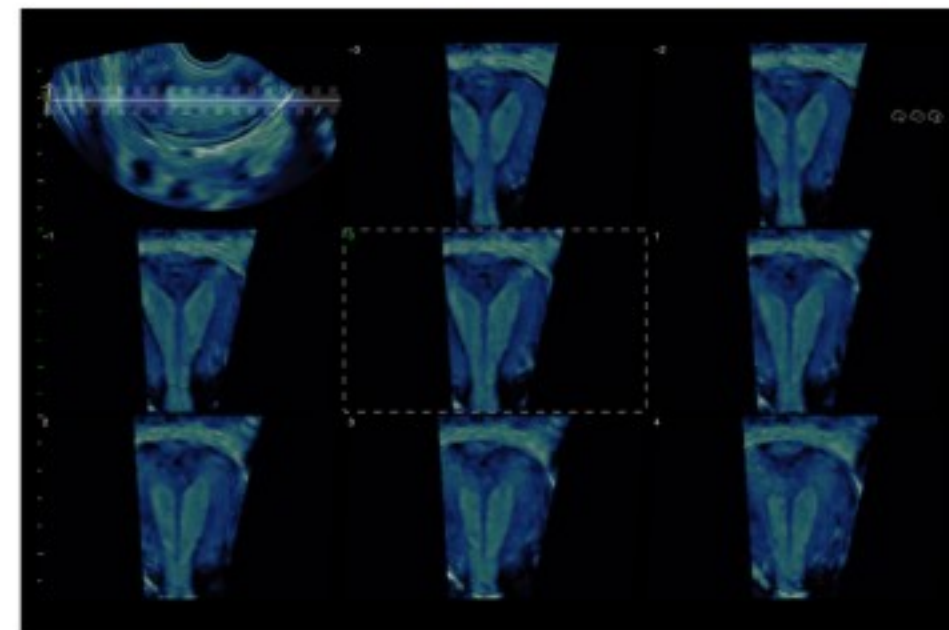
Auto EF 2CH



Comprehensive assessment tools insure confident diagnosis



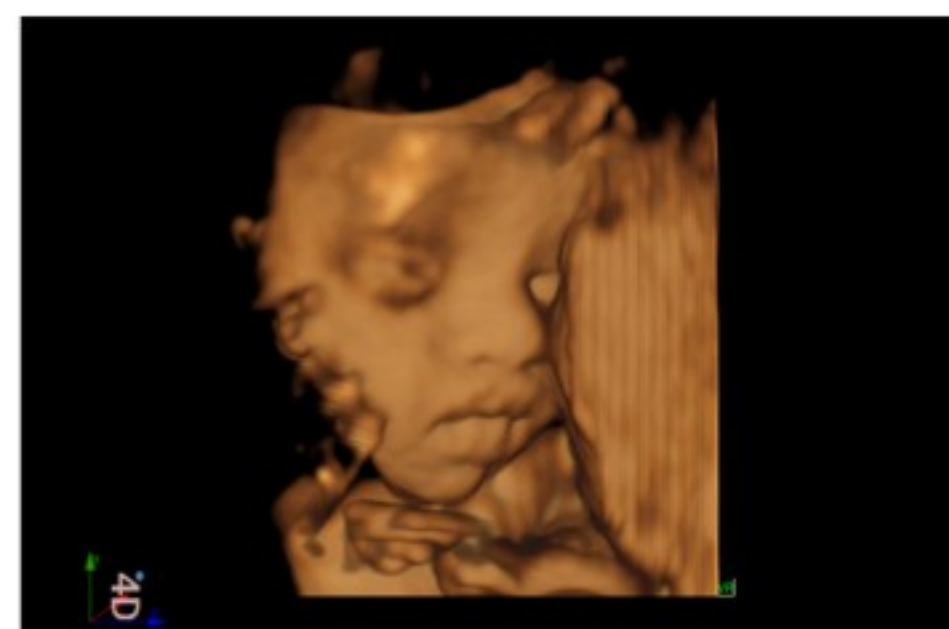
Baby face Lumi 4D



Uterine septum nSlice



23-week fetal heart



Baby face 4D



OB/GYN

Lumi 4D

Lumi 4D is an image rendering processing technology to present more lifelike 4D image with higher resolution. Light source with adjustable angle and position, and the shadow therefore, makes the image a much stronger three-dimensional sense.

nSlice

Presenting multi-sections of the 4D object from different angles by rotating to find the needed section quickly. Diagnostic accuracy is improved by adjusting the thickness and angle of the section, so as to observe the shape, size and surroundings of the target area more clearly.

Elastography

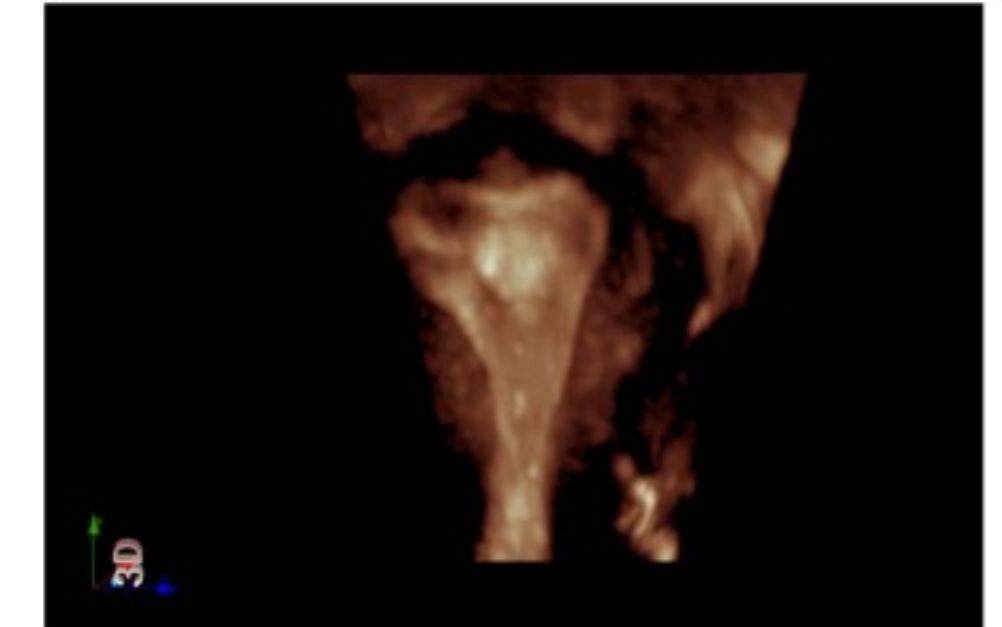
More and more women suffer from high risk of mammary diseases. Early diagnosis for prevention and warning means a great deal for women's health. Equipped with advanced Elastography, Apogee 5500 contributes to safe and accurate assessment of mammary diseases.



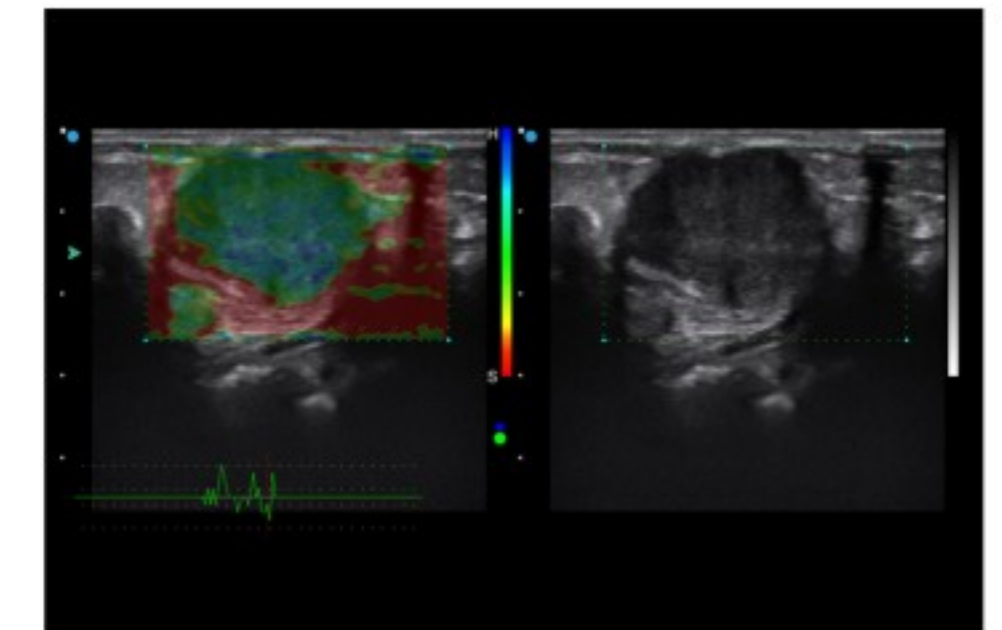
MSK

Needle enhancement

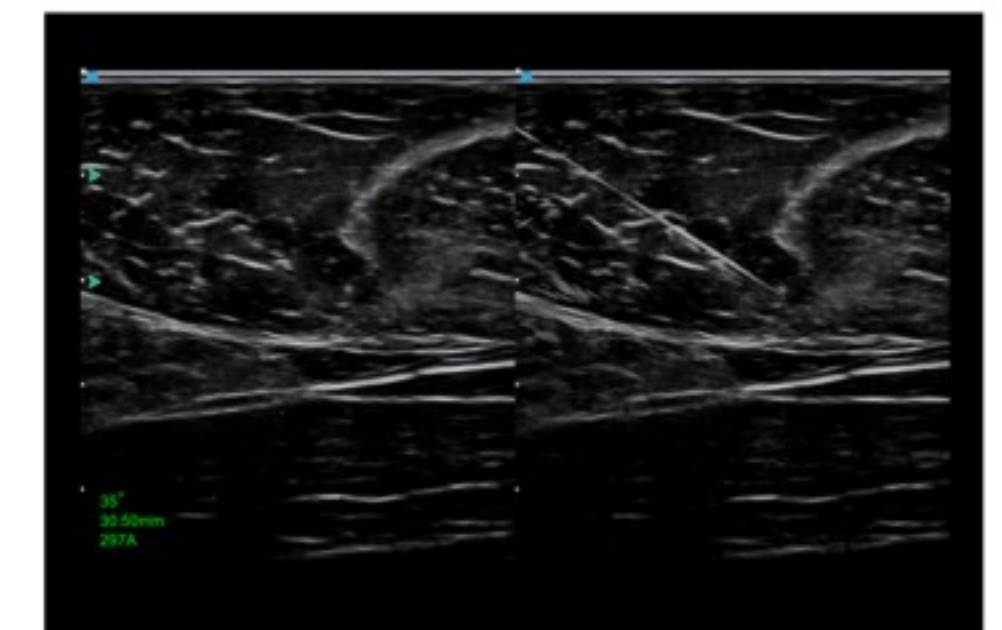
The system adjusts the angle of transmitted beams to tracks the needle and keeps vertical with it. It increases the needle visibility and enhances the needle tip, so as to offer the reliability and confidence to the clinicians.



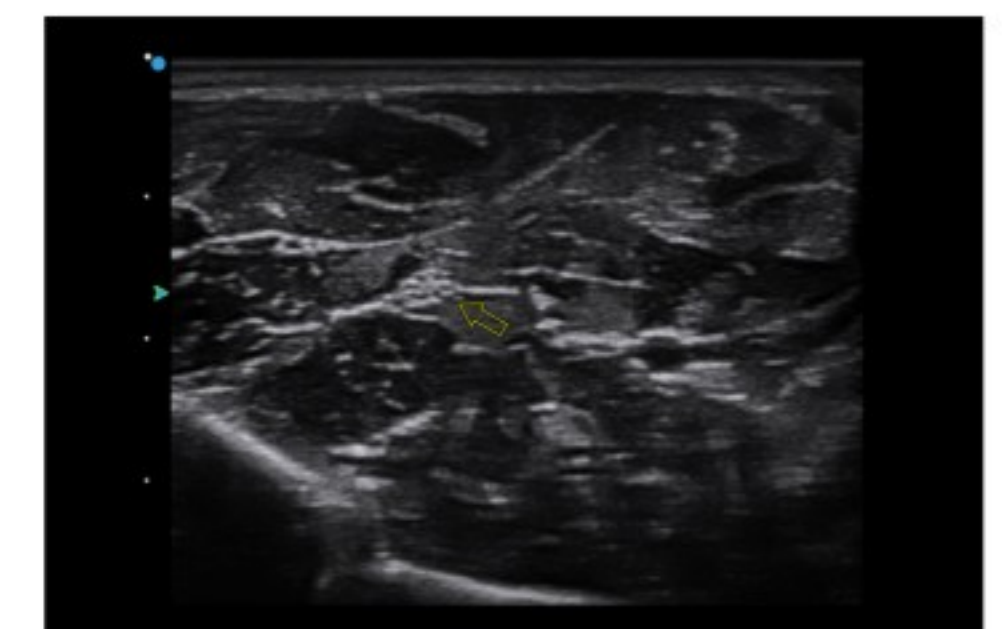
Uterine polyp 4D transvaginal



Breast fibroadenoma Elastography



Needle enhancement



Nerve

Ergonomic design and gesture-based layout increase operation comfort and efficiency



Apogee 5500 received the iF design award 2015



Gel-warmer warms up the gel to comfortable temperature (temperature adjustable from 0-50°C)



Distinct control panel with intuitive layout and elaborate button and knob smooth your operation



Lower down power supply avoids current interference

