



Shantou Institute of Ultrasonic Instruments Co., Ltd.

HEADQUARTERS:

Shantou Institute of Ultrasonic Instruments Co., Ltd.
Add: No.77, Jinsha Road, Shantou 515041 Guangdong, China
Tel: 86-754-8825 0150 Fax: 86-754-8825 1499
E-mail: siui@siui.com

HONG KONG OFFICE:

Shantou Institute of Ultrasonic Instruments (HK) Co., Ltd.
Add: Room 2101, Tung Chiu Commercial Center
193 Lockhart Road, Wanchai, Hong Kong
Tel: 852-2891 6722 Fax: 852-2891 6723

www.siui.com

© All rights reserved to SIUI 2019



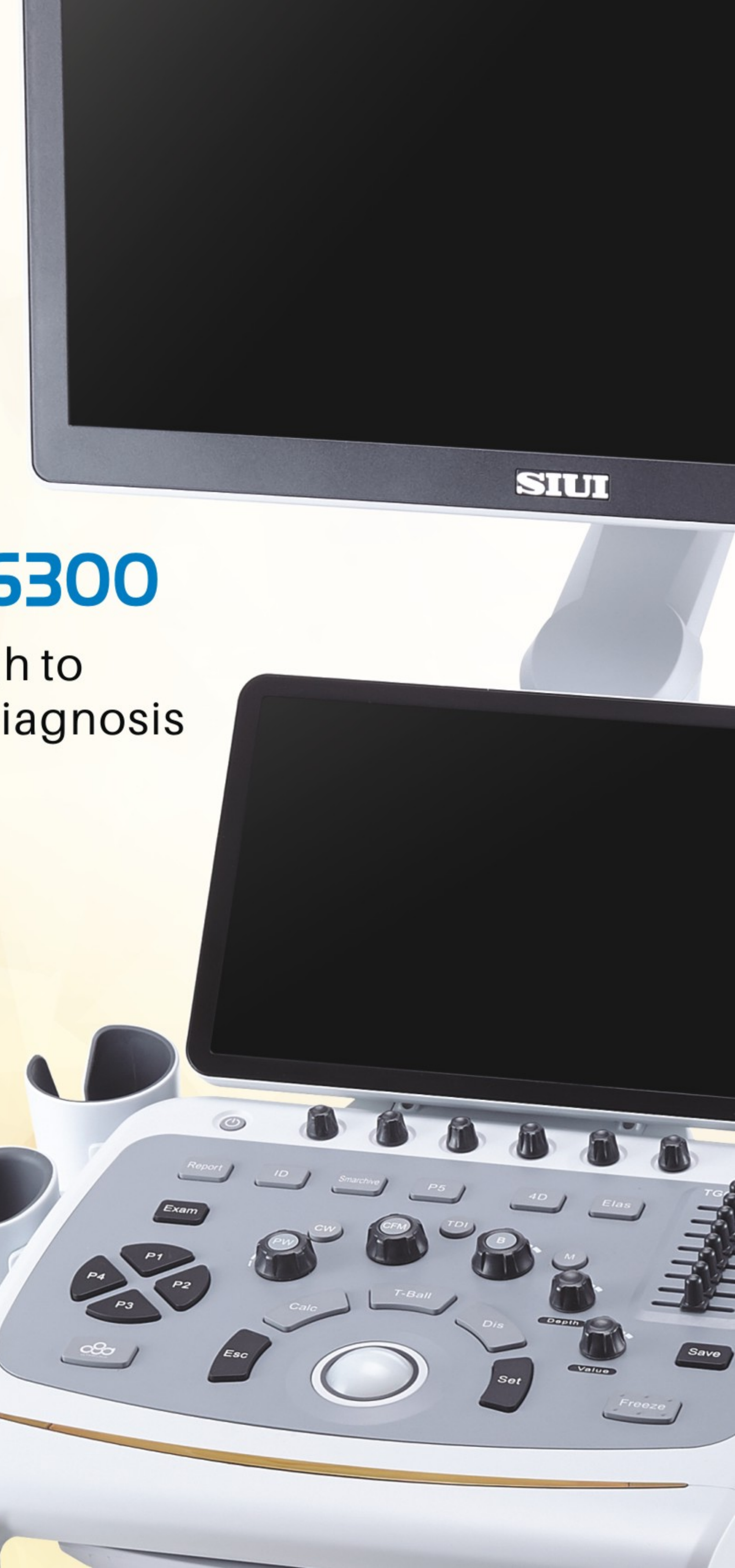
Apogee 6300/EN190321V1.0

SIUI

Apogee 6300

Smart Enough to
Guarantee Your Diagnosis

Powered by
RealView





Overview

Equipped with the intelligent processing technology, Apogee 6300 delivers excellent image quality at a high working efficiency. Innovative solutions shape a higher value with comprehensive clinical functions and powerful database. Endowed with a slim and ergonomic design, it is smart enough to guarantee your diagnosis.

Streamline design defines user-friendly experience

- **23" full HD LCD monitor:** qualified for medical imaging
- **13.3" wide touchscreen:** free angle adjustment back and forth
- **Compact control panel:** neat and well-arranged layout
- **Lightened streak:** fashion and ease your job
- **Gesture-based handle:** comfortable to use
- **Custom console:** simple and free height adjustable
 - 6 probe holders
 - 4 probe ports



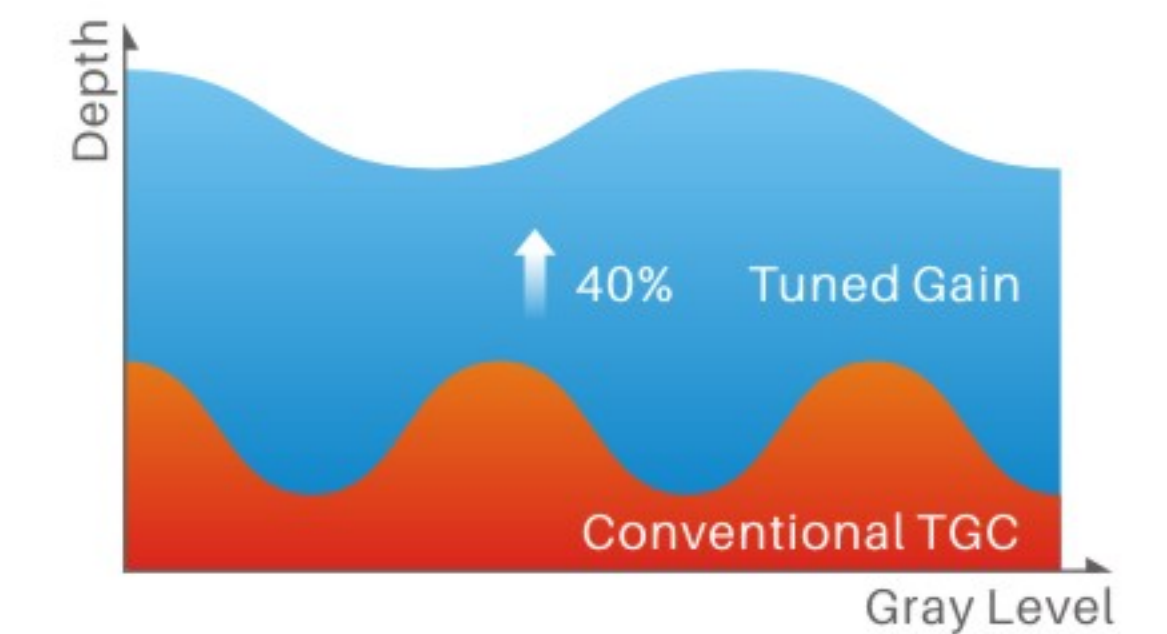
Brand new platform guarantees convincing image quality

The cutting-edge **RealView** image processing platform upgrades the system performance with premium image and accelerates the diagnostic process.



Tuned Gain

Through an intelligent echo compensation technology, it ensures the image uniformity of near-far field and facilitates the diagnosis on difficult-to-image patients.



Tailored Filter

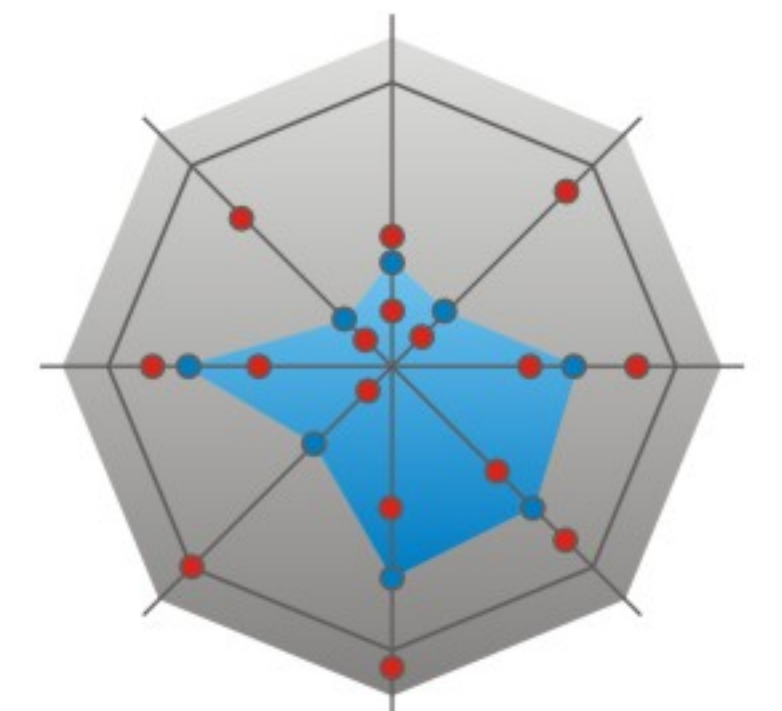
The fuzzy multi-filter technology automatically identifies all types of speckle noise and makes customized filtration. It presents a more distinct image.

Talented Encode

The fuzzy frequency encoding technology enhances the image penetration and resolution. It provides more useful imaging information and shows the lesions of different depths.

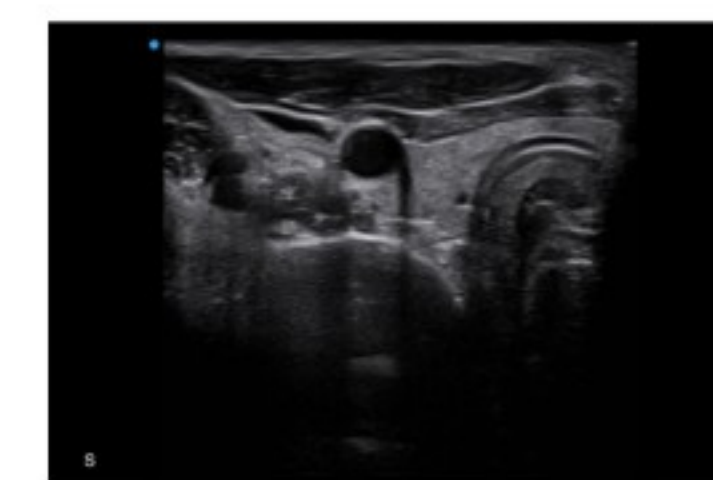
Tactile Flow

The logic flow analysis technology senses and captures subtle blood flow signal. It improves the ability to detect tumors and small lesions.

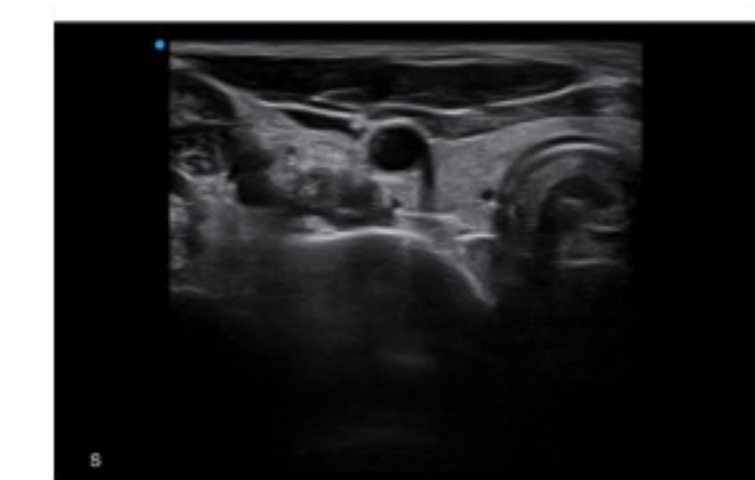


Targeted Beam

The upgraded spatial compounding imaging technology furthers the spatial resolution and reduces the echo shadow area. It plays an important role in Cardiology, Hepatology and OB/GYN.



Targeted Beam Off



Targeted Beam On

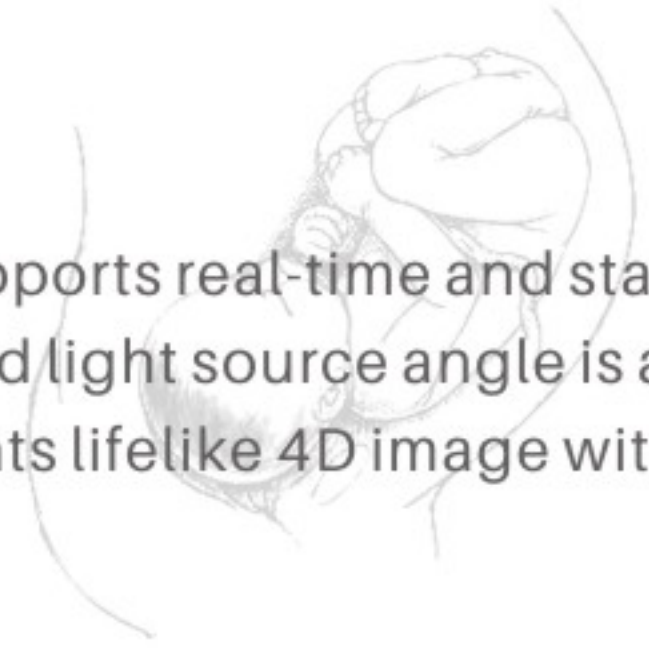
All-round solutions support professional diagnosis in dedicated field

Endowed with comprehensive application tool kit, the Apogee 6300 is versatile with outstanding performance in general imaging.

OB/GYN

Lumi 4D

With high resolution, it supports real-time and static stereoscopic imaging of fetus. The glossiness and light source angle is adjustable for a better display of details. It presents lifelike 4D image with more useful information.

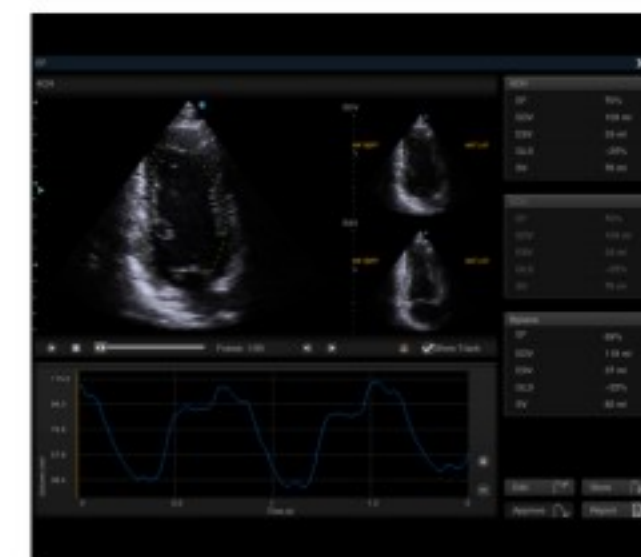


Fetal Face with Lumi 4D

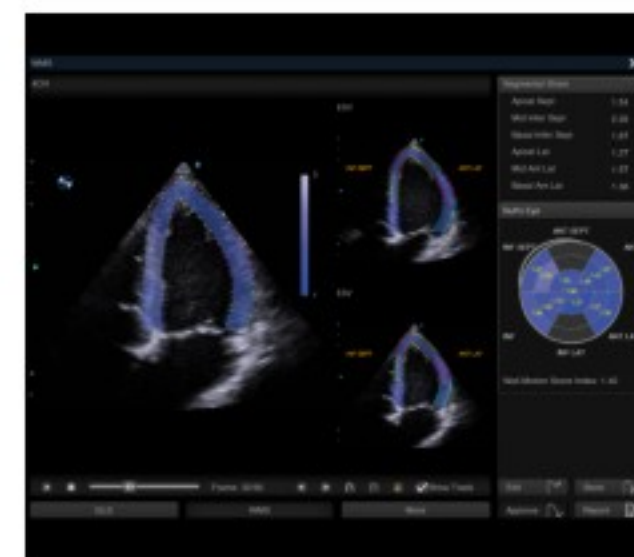
Cardiology

Auto EF & Auto SG

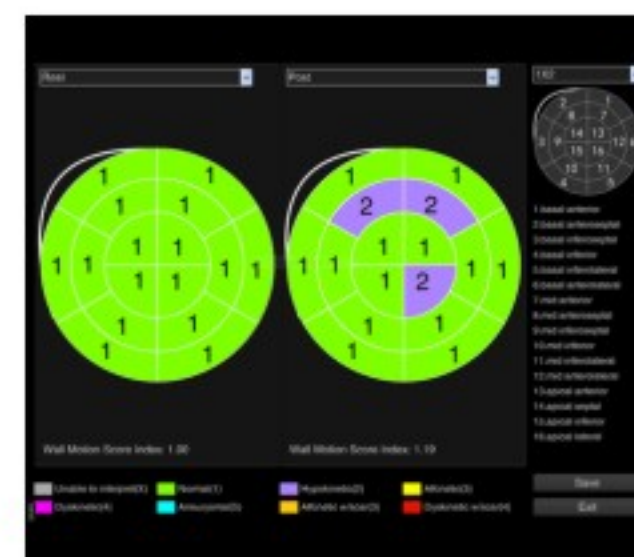
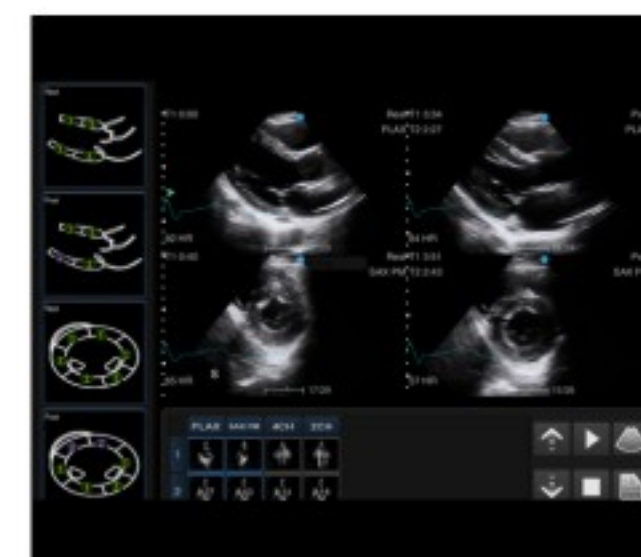
Based on speckle tracking technology, Auto EF & Auto SG is the effortless and efficient way to automatically measure the cardiac volumes and myocardial functions. LV EF, ESV, EDV and GLS are calculated at the same time. Besides, it provides a table of segmental strain, 17-segment and global WMS as bull's eye analysis, live tracking images, LV average GLS, and various waveform displays. They are together to offer a decision supporting tool to cardiac function diagnosis.



Auto EF



Wall Motion



Stress Echo

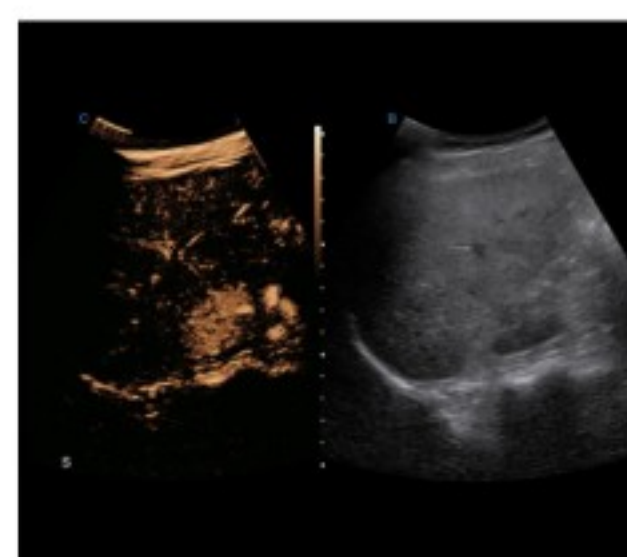
With the assistance of ECG module, Stress Echo acquires cardiac images and assesses wall motion at rest and stress. It is a non-invasive way to detect the coronary artery abnormality.

Radiology



Contrast Imaging

Abdominal ultrasound contrast imaging effectively enhances the 2D imaging and blood flow Doppler imaging of the liver and kidney. It offers a safe, real-time and affordable way for qualitative diagnosis of tumors.

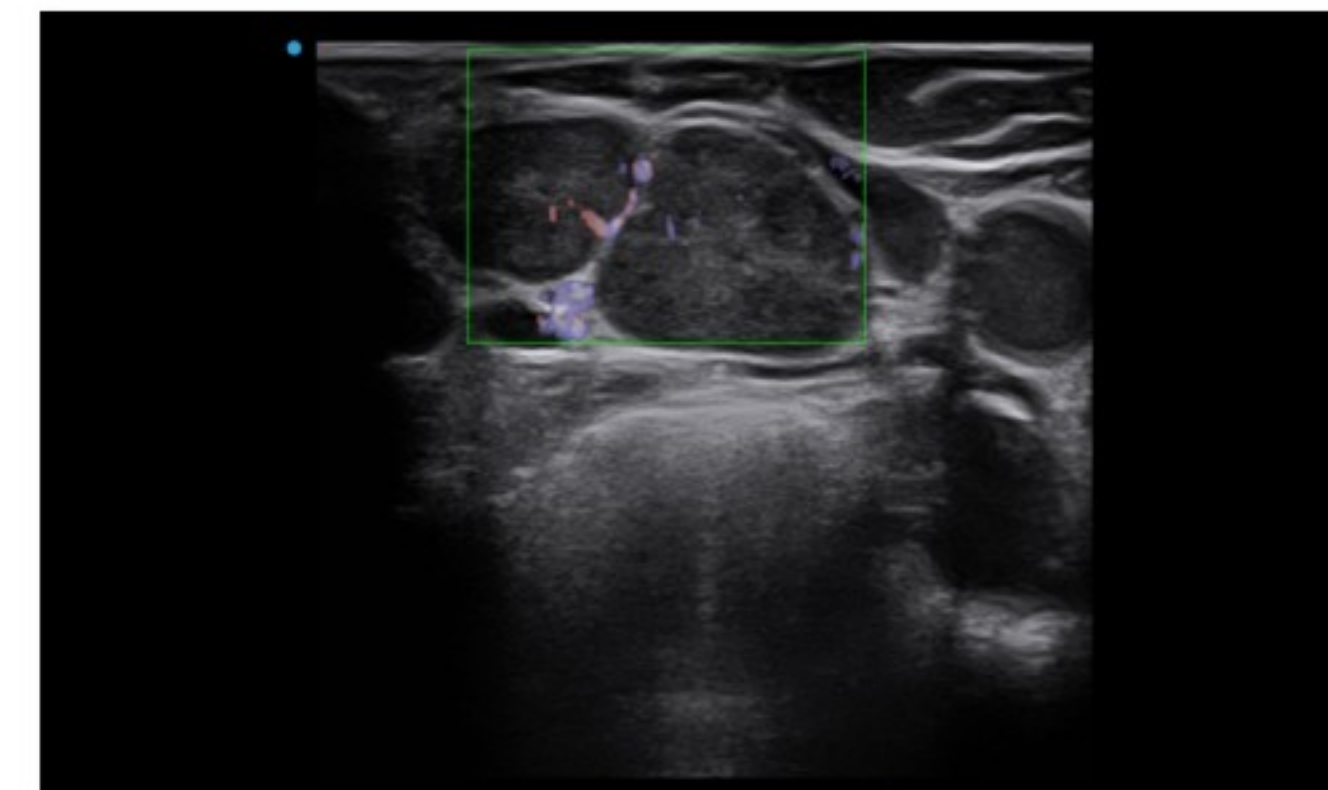


Liver with Contrast Imaging

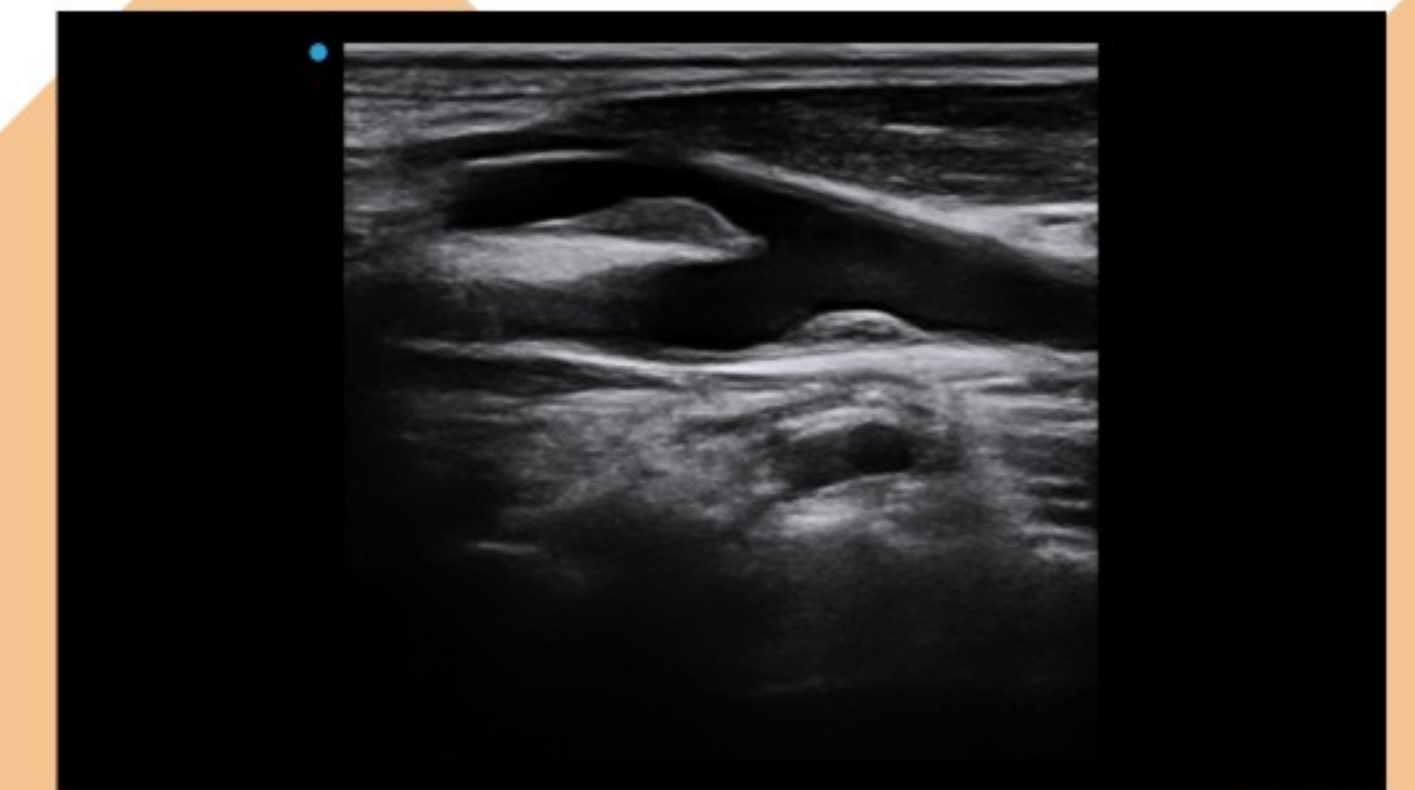
High performance delivers high clinical value



Image Gallery



Lymph Node Metastasis of Supraclavicular Fossa



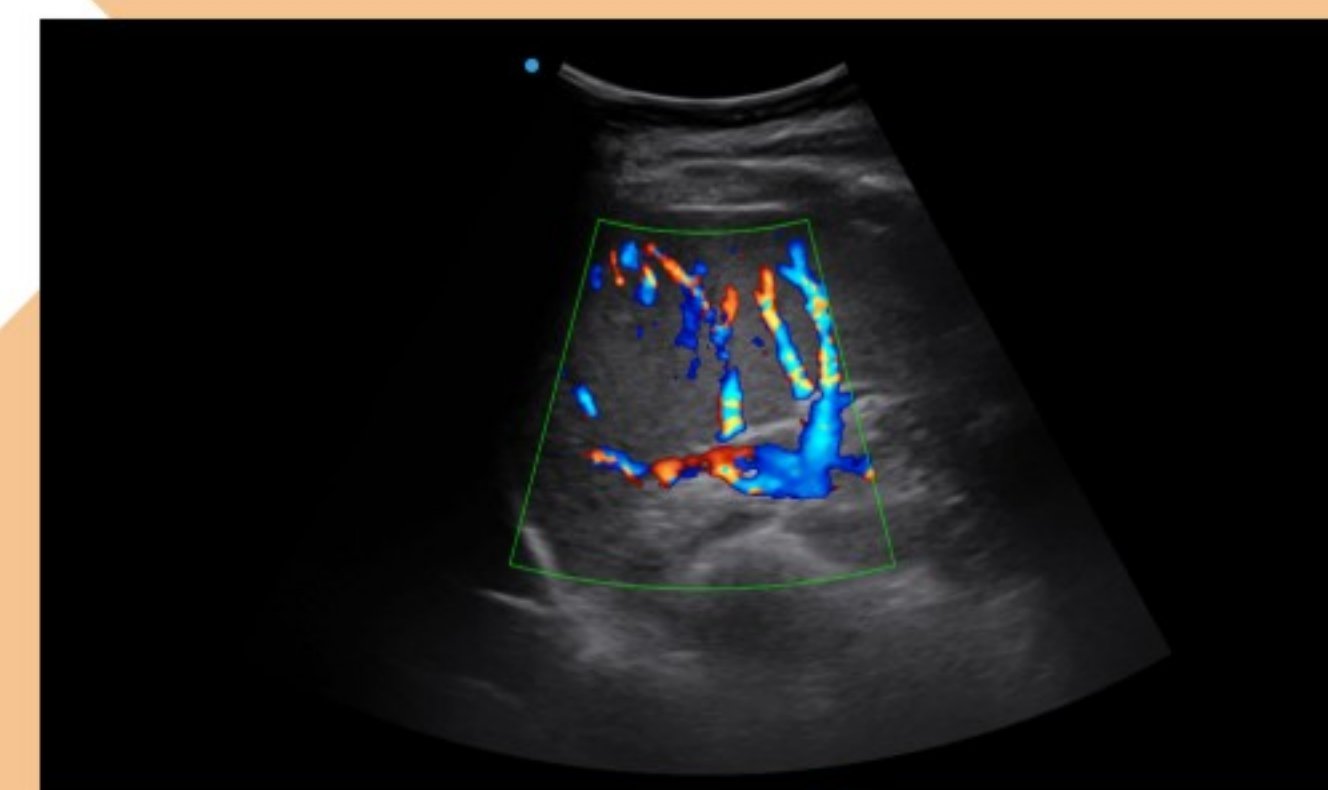
Carotid Bulb Plaque



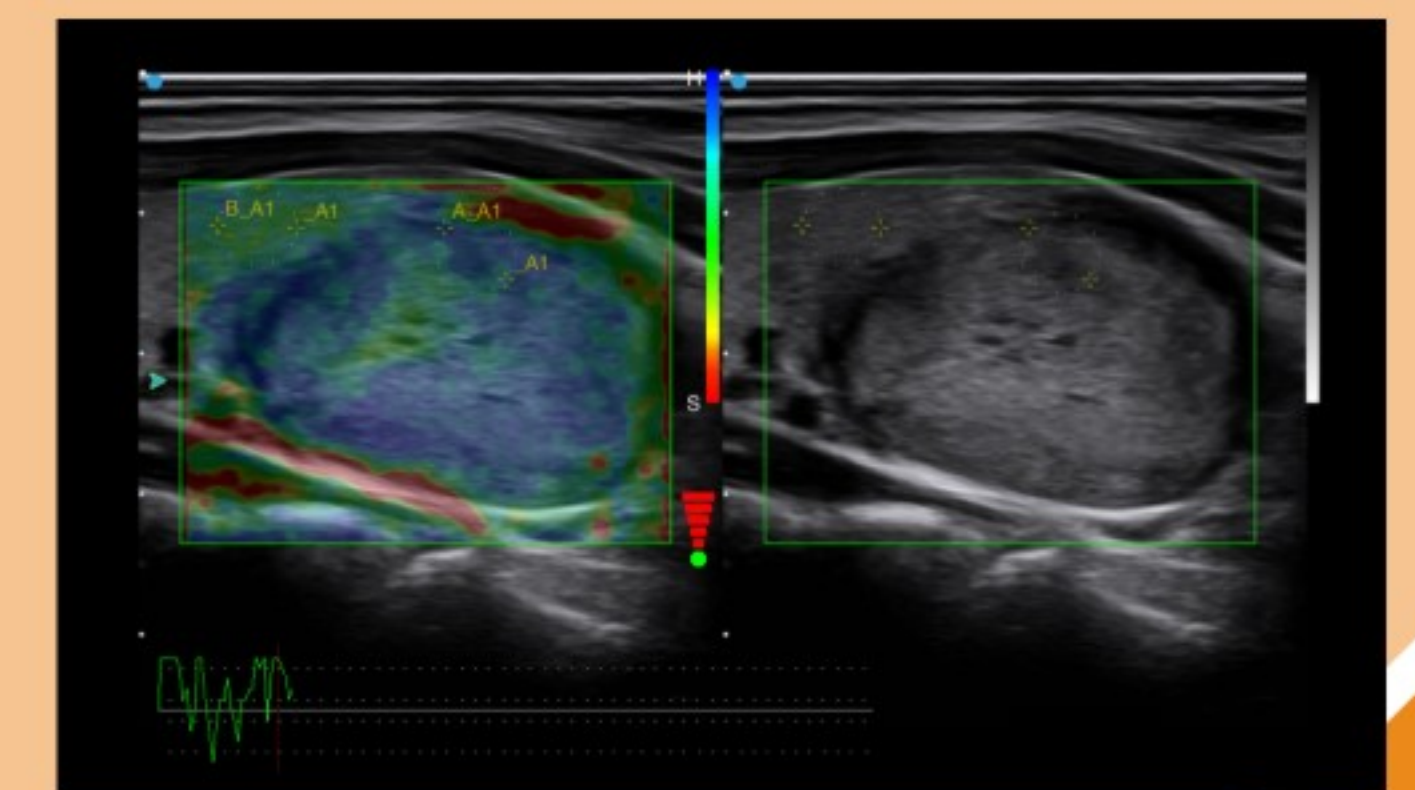
Left Ventricular Long-Axis



Liver



Spleen



Thyroid Adenoma Elastography with Strain



Advancing solution customizes timely ultrasound service

SIUI MAI, live service for ultrasound, is the product of medical IOT (Internet of Things) developed by SIUI. It connects the ultrasound system with the phone/pad, transferring image and sound simultaneously on both sides.

With a SIUI ultrasound system, a SIUI MAI mobile App, a camera with built-in microphone, and network (LAN/WIFI), you can access SIUI MAI freely. SIUI MAI provides a variety of services to save your time and cost.



Scan the QR code to download SIUI MAI on your phone



Remote online pre-sales demonstration gives you a general idea of any needed system before it's ordered.



Remote diagnostic support will offer you qualified imaging analysis and clinical solutions.



Remote online application training makes sure you know well of any applications you want to know.



Remote system maintenance will provide timely troubleshooting services.



Online public classes invite experts to share cases and exchange ideas with the audience.

See the future

Shantou Institute of Ultrasonic Instruments Co., Ltd. (SIUI) has been dedicated in focused area for over half a century, continuously providing professional imaging systems and up-to-date clinical solutions. SIUI boasts four product categories (incl. medical ultrasound, non-destructive testing, X-ray, cloud platform & big data) and four sections (incl. innovation section, manufacture section, marketing section and management section). According to the latest ranking of the industrial big data, SIUI ranked No. 7 in global medical ultrasound business and No. 3 in domestic industry in 2018.

Headquartered in Shantou on Jinsha Road with a new plant in Wan Ji District, SIUI also sets up R&D centers home and abroad, and builds subsidiaries across inland China and Hong Kong.



Four main R&D centers home and abroad

